

Courtesy Of David Lofthaug Of Bode

\$849,000 - 73 Jubilation Drive, St. Albert

MLS® #E4462498

\$849,000

3 Bedroom, 2.50 Bathroom, 2,299 sqft
Single Family on 0.00 Acres

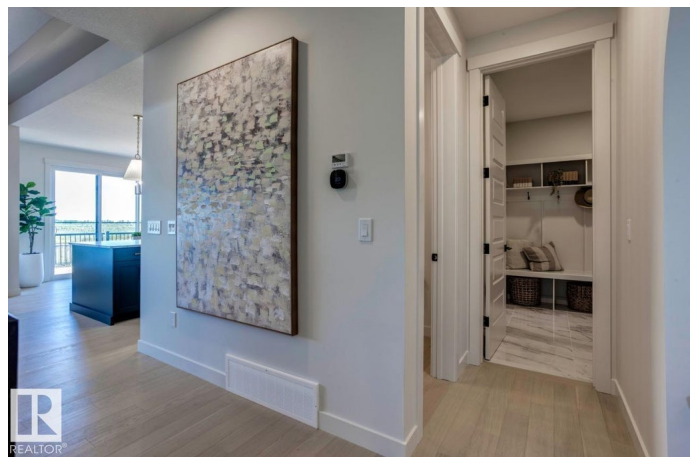
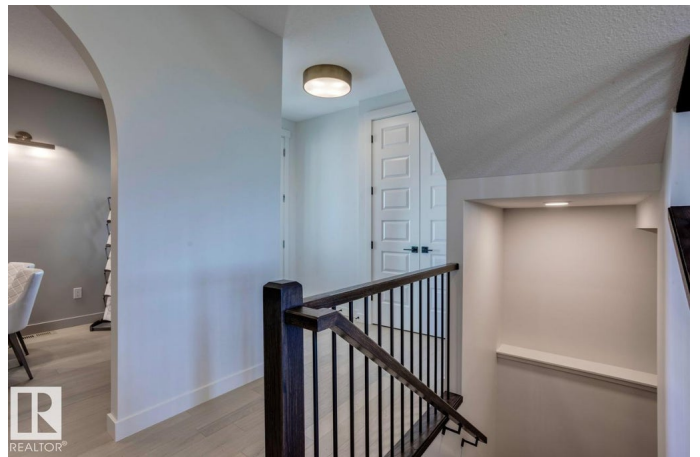
Jensen Lakes, St. Albert, AB

Discover the Bridgeport II showhome, a stunning 2,316 sq ft coastal farmhouse-style home that blends charm, comfort, and style. Featuring 3 bedrooms, 2.5 baths, and an open-concept main floor, this home welcomes you with a grand foyer leading to a spacious great room with a tray ceiling and striking 60' electric fireplace. The chef-inspired kitchen offers a large island, walk-through pantry, and designer finishes throughout. Upstairs, enjoy a raised and vaulted bonus room, convenient laundry, and a serene primary bedroom with a luxurious 5-piece ensuite and expansive walk-in closet. Thoughtful details, warm tones, and natural textures create a timeless aesthetic, while the coastal elevation adds undeniable curb appeal. Nestled in St. Albert's sought-after Jensen Lakes offering beach access, parks, and schools this showhome perfectly balances elegance and livability.

Built in 2025

Essential Information

MLS® #	E4462498
Price	\$849,000
Bedrooms	3
Bathrooms	2.50
Full Baths	2



Half Baths	1
Square Footage	2,299
Acres	0.00
Year Built	2025
Type	Single Family
Sub-Type	Detached Single Family
Style	2 Storey
Status	Active

Community Information

Address	73 Jubilation Drive
Area	St. Albert
Subdivision	Jensen Lakes
City	St. Albert
County	ALBERTA
Province	AB
Postal Code	T8N 8C5

Amenities

Amenities	Closet Organizers, Club House, No Animal Home, No Smoking Home
Parking Spaces	4
Parking	Double Garage Attached

Interior

Interior Features	ensuite bathroom
Appliances	Dishwasher-Built-In, Dryer, Hood Fan, Oven-Built-In, Oven-Microwave, Refrigerator, Stove-Electric, Washer, Window Coverings
Heating	Forced Air-1, Natural Gas
Fireplace	Yes
Fireplaces	Insert
Stories	2
Has Basement	Yes
Basement	Full, Unfinished

Exterior

Exterior	Wood, Vinyl
Exterior Features	Backs Onto Park/Trees, Lake Access Property, Park/Reserve, Playground Nearby, Schools, Shopping Nearby
Roof	Asphalt Shingles

Construction Wood, Vinyl
Foundation Concrete Perimeter

Additional Information

Date Listed October 17th, 2025
Days on Market 3
Zoning Zone 24
HOA Fees 500
HOA Fees Freq. Annually

DATA IS DEEMED RELIABLE BUT IS NOT GUARANTEED ACCURATE BY THE REALTORS® ASSOCIATION OF EDMONTON. COPYRIGHT 2025 BY THE REALTORS® ASSOCIATION OF EDMONTON. ALL RIGHTS RESERVED. Trademarks are owned or controlled by the Canadian Real Estate Association (CREA) and identify real estate professionals who are members of CREA (REALTOR®, REALTORS®) and/or the quality of services they provide (MLS®, Multiple Listing Service®)

Listing information last updated on October 20th, 2025 at 7:02pm MDT