

\$230,000 - 112 500 Palisades Way, Sherwood Park

MLS® #E4461690

\$230,000

1 Bedroom, 1.00 Bathroom, 750 sqft

Condo / Townhouse on 0.00 Acres

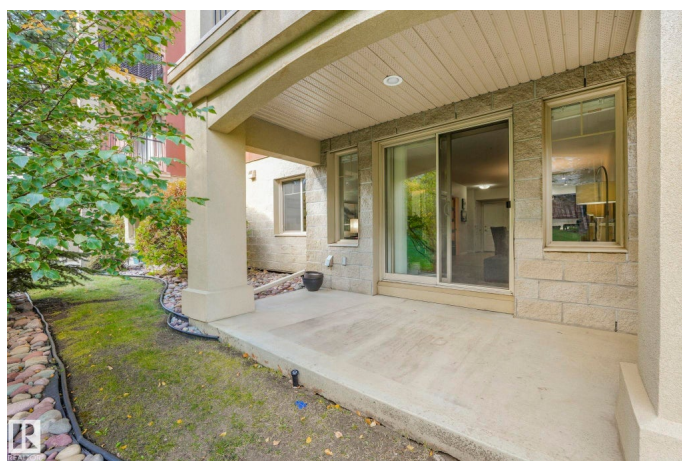
Centennial Village, Sherwood Park, AB

Experience sophisticated executive living in this impeccably maintained 1 bdrm + den condo, ideally located in one of the area's most sought-after communities, just steps from Centennial Park. Designed for those who appreciate quality and tranquility, this 18+ concrete building ensures a peaceful retreat from the everyday. Inside, elegant details shine like new quartz countertops, a stylish eating bar, and generous cabinetry combine to create a modern, functional space. The bdrm offers a walkthrough closet with direct access to the bath, while the den provides versatility for a home office, creative studio, or extra storage. Step onto your private patio, bordered by lush greenery and mature trees, perfect for morning coffee or quiet evenings. Enjoy premium amenities including a heated underground parkade, storage unit, social lounge, and fully equipped gym, creating a lifestyle of comfort, community, and convenience.

Built in 2009

Essential Information

MLS® #	E4461690
Price	\$230,000
Bedrooms	1
Bathrooms	1.00



Full Baths	1
Square Footage	750
Acres	0.00
Year Built	2009
Type	Condo / Townhouse
Sub-Type	Lowrise Apartment
Style	Single Level Apartment
Status	Active

Community Information

Address	112 500 Palisades Way
Area	Sherwood Park
Subdivision	Centennial Village
City	Sherwood Park
County	ALBERTA
Province	AB
Postal Code	T8H 0H7

Amenities

Amenities	Air Conditioner, Ceiling 9 ft., Closet Organizers, Exercise Room, No Animal Home, No Smoking Home, Parking-Visitor, Patio, Secured Parking, Social Rooms, Storage Cage
Parking	Heated, Parkade, Underground

Interior

Appliances	Air Conditioning-Central, Dishwasher-Built-In, Microwave Hood Fan, Refrigerator, Stacked Washer/Dryer, Stove-Electric, Window Coverings
Heating	Forced Air-1, Natural Gas
# of Stories	4
Stories	1
Has Basement	Yes
Basement	None, No Basement

Exterior

Exterior	Concrete, Brick
Exterior Features	Backs Onto Park/Trees, Park/Reserve, Public Transportation, Shopping Nearby
Roof	Asphalt Shingles
Construction	Concrete, Brick

Foundation Concrete Perimeter

Additional Information

Date Listed October 10th, 2025
Days on Market 1
Zoning Zone 25
Condo Fee \$482

DATA IS DEEMED RELIABLE BUT IS NOT GUARANTEED ACCURATE BY THE REALTORS® ASSOCIATION OF EDMONTON. COPYRIGHT 2025 BY THE REALTORS® ASSOCIATION OF EDMONTON. ALL RIGHTS RESERVED.Trademarks are owned or controlled by the Canadian Real Estate Association (CREA) and identify real estate professionals who are members of CREA (REALTOR®, REALTORS®) and/or the quality of services they provide (MLS®, Multiple Listing Service®)

Listing information last updated on October 10th, 2025 at 9:47pm MDT