

\$549,900 - 6303 179 Street, Edmonton

MLS® #E4461667

\$549,900

5 Bedroom, 3.00 Bathroom, 1,160 sqft
Single Family on 0.00 Acres

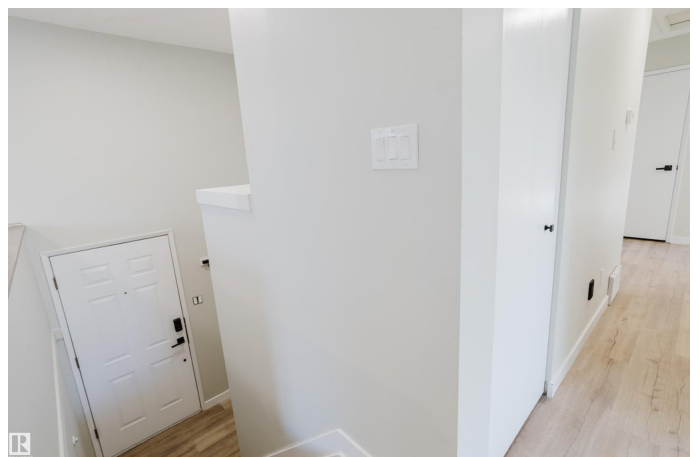
Ormsby Place, Edmonton, AB

Welcome to this beautifully renovated 5-bedroom, 3-bathroom bilevel, featuring a full 2-bedroom non permitted in-law suite â€” perfect for growing or multi-generational families. This home has been extensively updated inside and out, including new shingles, flooring, bathrooms, kitchens, appliances, interior and exterior doors, and garage door, along with many additional upgrades throughout. Enjoy privacy and space on an impressive 12,000+ sq. ft. corner lot, now fully enclosed with a new, high-quality fence. The oversized double garage provides ample room for parking and storage. With modern finishes, functional layout, and a separate lower suite, this property offers exceptional flexibility and value. A true move-in-ready home you wonâ€™t want to miss!

Built in 1978

Essential Information

MLS® #	E4461667
Price	\$549,900
Lease Rate	\$13
Bedrooms	5
Bathrooms	3.00
Full Baths	3
Square Footage	1,160



Acres	0.00
Year Built	1978
Type	Single Family
Sub-Type	Detached Single Family
Style	Bi-Level
Status	Active

Community Information

Address	6303 179 Street
Area	Edmonton
Subdivision	Ormsby Place
City	Edmonton
County	ALBERTA
Province	AB
Postal Code	T5T 2P2

Amenities

Amenities	Deck, Fire Pit, Hot Water Natural Gas, Sunroom, Natural Gas BBQ Hookup
Parking	Double Garage Attached

Interior

Interior Features	ensuite bathroom
Appliances	Garage Control, Garage Opener, Microwave Hood Fan, Storage Shed, Dryer-Two, Refrigerators-Two, Stoves-Two, Washers-Two, Dishwasher-Two
Heating	Forced Air-1, Natural Gas
Fireplace	Yes
Fireplaces	Mantel
Stories	2
Has Suite	Yes
Has Basement	Yes
Basement	Full, Finished

Exterior

Exterior	Wood, Metal, Vinyl
Exterior Features	Cul-De-Sac, Fenced, Flat Site, Landscaped, Paved Lane, Playground Nearby, Public Transportation, Schools, Shopping Nearby
Lot Description	1117m2

Roof	Asphalt Shingles
Construction	Wood, Metal, Vinyl
Foundation	Concrete Perimeter

School Information

Elementary	Ormsby School
Middle	S.Bruce Smith School
High	Jasper Place

Additional Information

Date Listed	October 10th, 2025
Days on Market	1
Zoning	Zone 20

DATA IS DEEMED RELIABLE BUT IS NOT GUARANTEED ACCURATE BY THE REALTORS® ASSOCIATION OF EDMONTON. COPYRIGHT 2025 BY THE REALTORS® ASSOCIATION OF EDMONTON. ALL RIGHTS RESERVED.Trademarks are owned or controlled by the Canadian Real Estate Association (CREA) and identify real estate professionals who are members of CREA (REALTOR®, REALTORS®) and/or the quality of services they provide (MLS®, Multiple Listing Service®)

Listing information last updated on October 10th, 2025 at 10:02pm MDT