

\$174,800 - 416 11511 27 Avenue, Edmonton

MLS® #E4460248

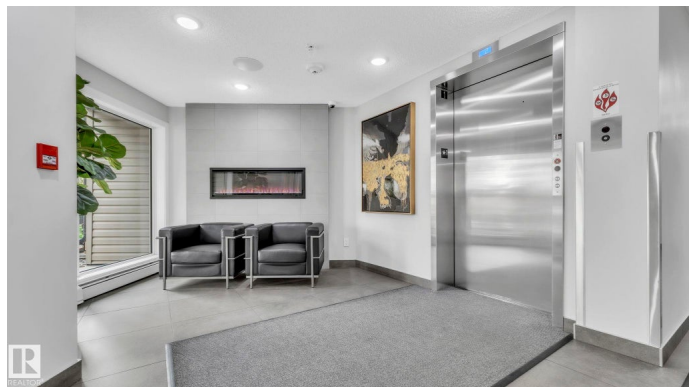
\$174,800

2 Bedroom, 1.00 Bathroom, 750 sqft

Condo / Townhouse on 0.00 Acres

Blue Quill, Edmonton, AB

This impressive 2-bdrm condo in Edmontonâ€™s sought-after Blue Quill community sets the bar for modern & convenient living. What's even better? It is cheaper than renting! Perfectly situated near transit, shopping, schools, parks, & walking paths, you will LOVE the lifestyle that this location provides. Inside, youâ€™ll notice the thoughtful upgrades - from the open concept layout, private balcony, thoughtful design, quartz countertops, heated underground parking and in-suite laundry with extra storage. The secure, well-managed building offers peace of mind with 24/7 monitoring, 24 cameras & a caring on-site manager. With low condo fees that include heat, water & waste removal, plenty of visitor parking & even pet-friendly policies (with board approval), itâ€™s a property that truly covers every detail. Whether youâ€™re relaxing at home or exploring the vibrant neighborhood, this Blue Quill condo is where comfort, convenience & style meet. Don't miss out on this incredible opportunity to love where you live!



Built in 2019

Essential Information

MLS® # E4460248

Price \$174,800

Bedrooms	2
Bathrooms	1.00
Full Baths	1
Square Footage	750
Acres	0.00
Year Built	2019
Type	Condo / Townhouse
Sub-Type	Lowrise Apartment
Style	Single Level Apartment
Status	Active

Community Information

Address	416 11511 27 Avenue
Area	Edmonton
Subdivision	Blue Quill
City	Edmonton
County	ALBERTA
Province	AB
Postal Code	T6J 7J8

Amenities

Amenities	No Smoking Home, Parking-Extra, Parking-Visitor, Secured Parking, Security Door, Storage-In-Suite
Parking	Underground

Interior

Appliances	Dishwasher-Built-In, Dryer, Microwave Hood Fan, Refrigerator, Stove-Electric, Washer, Window Coverings
Heating	Baseboard, Natural Gas
# of Stories	4
Stories	1
Has Basement	Yes
Basement	None, No Basement

Exterior

Exterior	Wood, Stone, Vinyl
Exterior Features	Playground Nearby, Public Transportation, Schools, Shopping Nearby, See Remarks
Roof	Asphalt Shingles

Construction	Wood, Stone, Vinyl
Foundation	Concrete Perimeter

Additional Information

Date Listed	September 30th, 2025
Days on Market	2
Zoning	Zone 16
Condo Fee	\$428

DATA IS DEEMED RELIABLE BUT IS NOT GUARANTEED ACCURATE BY THE REALTORS® ASSOCIATION OF EDMONTON. COPYRIGHT 2025 BY THE REALTORS® ASSOCIATION OF EDMONTON. ALL RIGHTS RESERVED.Trademarks are owned or controlled by the Canadian Real Estate Association (CREA) and identify real estate professionals who are members of CREA (REALTOR®, REALTORS®) and/or the quality of services they provide (MLS®, Multiple Listing Service®)

Listing information last updated on October 2nd, 2025 at 5:03pm MDT