

Courtesy Of Jack Sommert Of Exp Realty

\$337,500 - 3512 114 Avenue, Edmonton

MLS® #E4460037

\$337,500

3 Bedroom, 1.00 Bathroom, 1,024 sqft
Single Family on 0.00 Acres

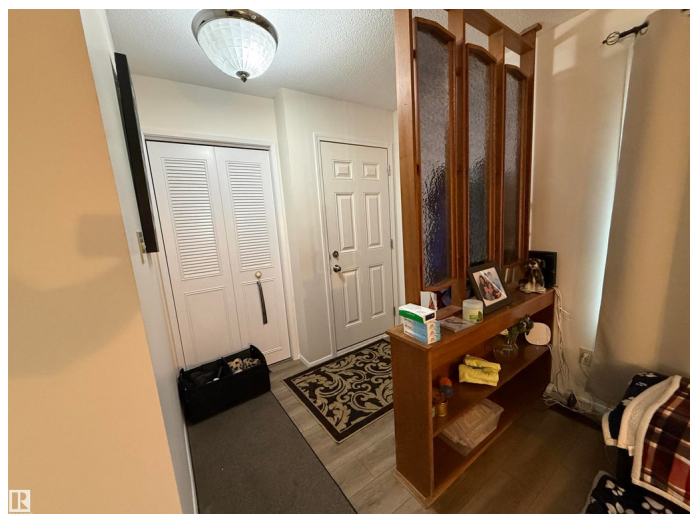
Beverly Heights, Edmonton, AB

Downsizer? First Time Home Buyer? Investor? This is for you! 3-bed bungalow in Beverly Heights on a massive 54'—120 lot with front AND rear lane access. Main floor fully updated in 2021 with SOLID OAK kitchen cabinets, vinyl plank flooring, updated bathroom, TRIPLE-PANE windows, and AIR CONDITIONING. Major mechanicals done: 50 YEAR shingles (2017), furnace/HWT (2019), electrical upgrades (2022). All new appliances in 2022. Expansive basement with the perfect layout for a family room, bar/games area, or a future suite with separate entrance. Outside features underground sprinklers, huge APPLE TREES, sheds, RV PARKING, and tons of space to build an oversized garage with front and rear access. Wheelchair ramp at the entry or easily convert to a charming front porch. Steps away from Rundle Park's year-round activities, trails, river valley, and quick access to schools, shopping, Yellowhead and Henday. A perfect first-home or value-add investment in a growing community.

Built in 1968

Essential Information

MLS® #	E4460037
Price	\$337,500
Bedrooms	3



Bathrooms	1.00
Full Baths	1
Square Footage	1,024
Acres	0.00
Year Built	1968
Type	Single Family
Sub-Type	Detached Single Family
Style	Bungalow
Status	Active

Community Information

Address	3512 114 Avenue
Area	Edmonton
Subdivision	Beverly Heights
City	Edmonton
County	ALBERTA
Province	AB
Postal Code	T5W 0S3

Amenities

Amenities	Off Street Parking, On Street Parking, Air Conditioner, Front Porch, Hot Wtr Tank-Energy Star, No Smoking Home, R.V. Storage, Vinyl Windows
Parking	Front Drive Access, Front/Rear Drive Access, RV Parking

Interior

Appliances	Air Conditioning-Central, Dryer, Hood Fan, Refrigerator, Storage Shed, Stove-Electric, Washer, Window Coverings
Heating	Forced Air-1, Natural Gas
Stories	1
Has Basement	Yes
Basement	Full, Unfinished

Exterior

Exterior	Wood, Vinyl
Exterior Features	Back Lane, Fenced, Flat Site, Fruit Trees/Shrubs, Golf Nearby, Landscaped, Public Transportation, Schools, Shopping Nearby
Roof	Asphalt Shingles
Construction	Wood, Vinyl
Foundation	Concrete Perimeter

Additional Information

Date Listed September 29th, 2025

Days on Market 13

Zoning Zone 23

DATA IS DEEMED RELIABLE BUT IS NOT GUARANTEED ACCURATE BY THE REALTORS® ASSOCIATION OF EDMONTON. COPYRIGHT 2025 BY THE REALTORS® ASSOCIATION OF EDMONTON. ALL RIGHTS RESERVED. Trademarks are owned or controlled by the Canadian Real Estate Association (CREA) and identify real estate professionals who are members of CREA (REALTOR®, REALTORS®) and/or the quality of services they provide (MLS®, Multiple Listing Service®)

Listing information last updated on October 12th, 2025 at 1:47am MDT