

\$400,000 - 424 Chappelle Drive, Edmonton

MLS® #E4459821

\$400,000

3 Bedroom, 3.50 Bathroom, 1,436 sqft

Single Family on 0.00 Acres

Chappelle Area, Edmonton, AB

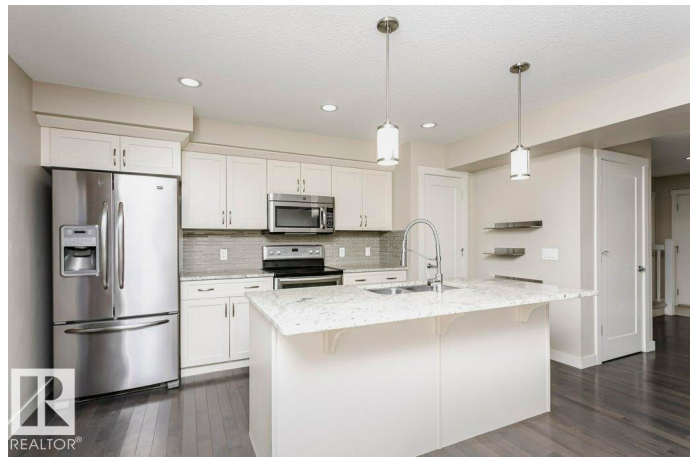
Step inside this stunning 3 bedroom, 3.5 bathroom home and prepare to be impressed. The bright, open main floor welcomes you w/ rich hardwood floors, a spacious living room, and a convenient half bath. At the heart of the home is a beautiful white chef's kitchen feat. granite countertops, S/S appliances, a large island, pantry, and abundant storage—perfect for cooking, entertaining, & gathering with family. Upstairs offers the ideal layout w/ two generous primary suites, each w/ it's own spacious closets & full bathroom, plus a versatile office nook. The fully finished basement expands your living space w/ an additional bedroom/ office, a luxurious spa-inspired bathroom, & a rec area ideal for family movie nights or a home gym. Out back, enjoy a private deck, detached garage, & low-maintenance yard. Located in the highly desirable community of Chappelle, you'll be just steps from schools, parks, playgrounds, trails, and all the amenities you could ask for! **Some photos have been virtually staged.

Built in 2014

Essential Information

MLS® # E4459821

Price \$400,000



Bedrooms	3
Bathrooms	3.50
Full Baths	3
Half Baths	1
Square Footage	1,436
Acres	0.00
Year Built	2014
Type	Single Family
Sub-Type	Residential Attached
Style	2 Storey
Status	Active

Community Information

Address	424 Chappelle Drive
Area	Edmonton
Subdivision	Chappelle Area
City	Edmonton
County	ALBERTA
Province	AB
Postal Code	T6W 0Z3

Amenities

Amenities	Deck, See Remarks
Parking	Single Garage Detached

Interior

Interior Features	ensuite bathroom
Appliances	Dishwasher-Built-In, Dryer, Garage Control, Garage Opener, Microwave Hood Fan, Refrigerator, Stove-Electric
Heating	Forced Air-1, Natural Gas
Stories	3
Has Basement	Yes
Basement	Full, Finished

Exterior

Exterior	Wood, Stone, Vinyl
Exterior Features	Airport Nearby, Back Lane, Flat Site, Landscaped, Playground Nearby, Public Transportation, Schools, Shopping Nearby
Roof	Asphalt Shingles

Construction	Wood, Stone, Vinyl
Foundation	Concrete Perimeter

Additional Information

Date Listed	September 27th, 2025
Days on Market	2
Zoning	Zone 55
HOA Fees	105
HOA Fees Freq.	Annually

DATA IS DEEMED RELIABLE BUT IS NOT GUARANTEED ACCURATE BY THE REALTORS® ASSOCIATION OF EDMONTON. COPYRIGHT 2025 BY THE REALTORS® ASSOCIATION OF EDMONTON. ALL RIGHTS RESERVED.Trademarks are owned or controlled by the Canadian Real Estate Association (CREA) and identify real estate professionals who are members of CREA (REALTOR®, REALTORS®) and/or the quality of services they provide (MLS®, Multiple Listing Service®)

Listing information last updated on September 29th, 2025 at 3:17pm MDT