

## \$699,900 - 3528 Claxton Crescent, Edmonton

MLS® #E4459640

**\$699,900**

5 Bedroom, 3.50 Bathroom, 2,505 sqft

Single Family on 0.00 Acres

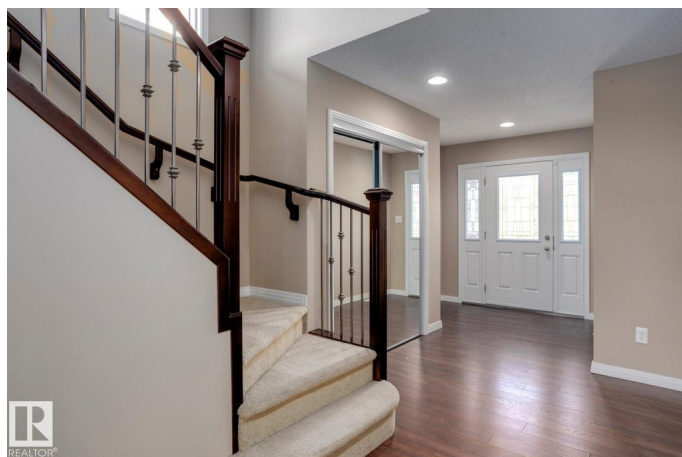
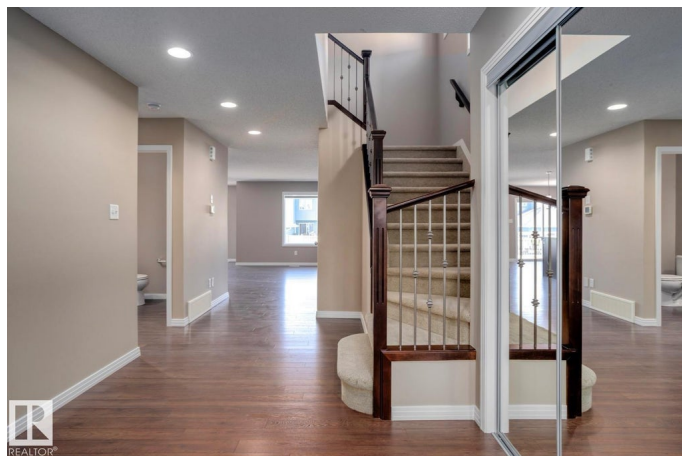
Chappelle Area, Edmonton, AB

Welcome to 3528 Claxton Crescent, a 2,505 sq ft home built in 2012. This property features 3 bedrooms and 2.5 bathrooms, plus a developed 2-bedroom legal suite with a separate entrance. The main floor offers an open-concept design connecting the kitchen, dining, and living spaces. Upstairs, the primary suite includes a private ensuite, with two additional bedrooms, a full bathroom, and a bonus room. A double attached garage provides parking and storage. Located near schools, parks, shopping, and commuter routes. Photos are representative.

Built in 2012

### Essential Information

MLS® #	E4459640
Price	\$699,900
Bedrooms	5
Bathrooms	3.50
Full Baths	3
Half Baths	1
Square Footage	2,505
Acres	0.00
Year Built	2012
Type	Single Family
Sub-Type	Detached Single Family
Style	2 Storey



Status	Active
--------	--------

## Community Information

Address	3528 Claxton Crescent
Area	Edmonton
Subdivision	Chappelle Area
City	Edmonton
County	ALBERTA
Province	AB
Postal Code	T6W 0Z6

## Amenities

Amenities	Closet Organizers
Parking Spaces	5
Parking	Double Garage Detached, Parking Pad Cement/Paved

## Interior

Interior Features	ensuite bathroom
Appliances	None
Heating	Forced Air-1, Natural Gas
Stories	3
Has Suite	Yes
Has Basement	Yes
Basement	Full, Finished

## Exterior

Exterior	Wood, Stone, Vinyl
Exterior Features	Back Lane, Low Maintenance Landscape, Park/Reserve, Playground Nearby, Public Transportation, Schools, Shopping Nearby
Roof	Asphalt Shingles
Construction	Wood, Stone, Vinyl
Foundation	Concrete Perimeter

## Additional Information

Date Listed	September 26th, 2025
Days on Market	3
Zoning	Zone 55

DATA IS DEEMED RELIABLE BUT IS NOT GUARANTEED ACCURATE BY THE REALTORS® ASSOCIATION OF EDMONTON. COPYRIGHT 2025 BY THE REALTORS® ASSOCIATION OF EDMONTON. ALL RIGHTS RESERVED. Trademarks are owned or controlled by the Canadian Real Estate Association (CREA) and identify real

estate professionals who are members of CREA (REALTOR®®, REALTORS®®) and/or the quality of services they provide (MLS®®, Multiple Listing Service®®)

Listing information last updated on September 29th, 2025 at 4:47pm MDT