

\$329,900 - 313 2510 109 Street, Edmonton

MLS® #E4455046

\$329,900

2 Bedroom, 2.00 Bathroom, 1,023 sqft

Condo / Townhouse on 0.00 Acres

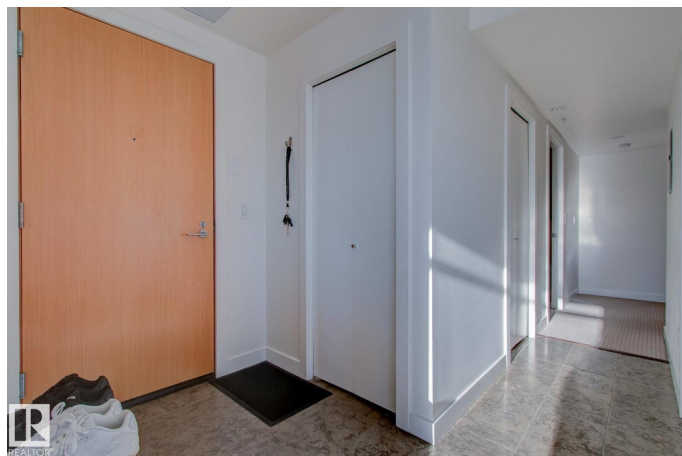
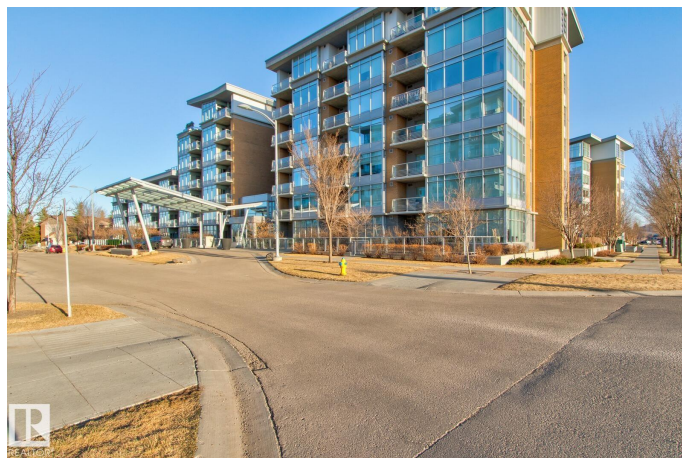
Ermineskin, Edmonton, AB

This 2 bedroom, 2 bathroom unit was built with high end craftsmanship and contemporary architecture. Sun drenched corner unit with South and West exposures and loads of windows and panoramic views. The chef's kitchen has a clean modern feel with built in SS appliances, quartz countertops/ backsplash and built in appliances. There are two spacious bedrooms with large windows. The master bedroom features a stunning ensuite with dual sinks, soaker tub and large glassed in shower. Also features a fireplace, laundry, underground parking and more! For more details visit the REALTOR's® Website

Built in 2008

Essential Information

| | |
|----------------|------------------------|
| MLS® # | E4455046 |
| Price | \$329,900 |
| Bedrooms | 2 |
| Bathrooms | 2.00 |
| Full Baths | 2 |
| Square Footage | 1,023 |
| Acres | 0.00 |
| Year Built | 2008 |
| Type | Condo / Townhouse |
| Sub-Type | Apartment High Rise |
| Style | Single Level Apartment |



Status Active

Community Information

Address 313 2510 109 Street
Area Edmonton
Subdivision Ermineskin
City Edmonton
County ALBERTA
Province AB
Postal Code T6J 2X1

Amenities

Amenities Air Conditioner, Exercise Room, Parking-Visitor, Storage-Locker Room
Parking Spaces 1
Parking Underground

Interior

Interior Features ensuite bathroom
Appliances Dishwasher-Built-In, Dryer, Refrigerator, Stove-Electric, Washer
Heating Fan Coil, Natural Gas
Fireplace Yes
Fireplaces Tile Surround
of Stories 8
Stories 1
Has Basement Yes
Basement None, No Basement

Exterior

Exterior Steel, Brick, Concrete, Metal
Exterior Features Landscaped, Paved Lane, Playground Nearby, Public Swimming Pool, Public Transportation, Schools, Shopping Nearby, Ski Hill Nearby
Roof Flat
Construction Steel, Brick, Concrete, Metal
Foundation Concrete Perimeter

Additional Information

Date Listed August 28th, 2025
Days on Market 1
Zoning Zone 16

Condo Fee \$923

DATA IS DEEMED RELIABLE BUT IS NOT GUARANTEED ACCURATE BY THE REALTORS® ASSOCIATION OF EDMONTON. COPYRIGHT 2025 BY THE REALTORS® ASSOCIATION OF EDMONTON. ALL RIGHTS RESERVED.Trademarks are owned or controlled by the Canadian Real Estate Association (CREA) and identify real estate professionals who are members of CREA (REALTOR®, REALTORS®) and/or the quality of services they provide (MLS®, Multiple Listing Service®)

Listing information last updated on August 29th, 2025 at 1:02am MDT