

\$499,900 - 13 Dressler Crest, St. Albert

MLS® #E4454725

\$499,900

4 Bedroom, 3.50 Bathroom, 1,690 sqft

Single Family on 0.00 Acres

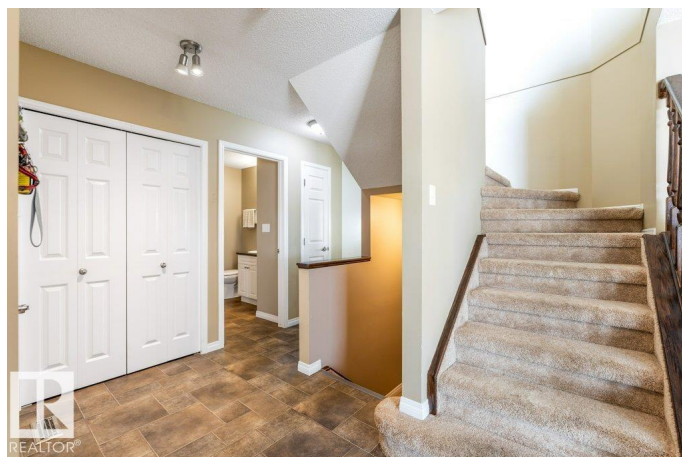
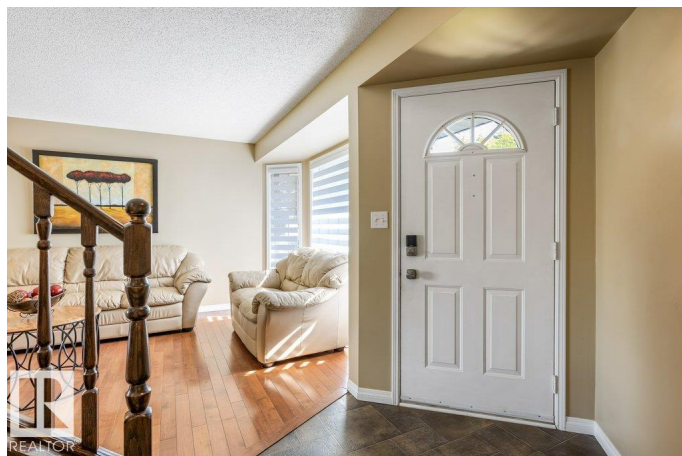
Deer Ridge (St. Albert), St. Albert, AB

Situated on a quiet cul de sac, steps to Muriel Martin Elementary, parks and trails is this immaculately maintained home. The main floor is bright, warm and inviting and features a front living room, dining room/flex room, cozy family room with GAS FIREPLACE, VAULTED CEILINGS and lots of windows, UPDATED WHITE KITCHEN with full height cabinetry, modern tile backsplash, stainless steel appliances (including brand new induction stove) and a half bath with MAIN FLOOR LAUNDRY. Upstairs has three large bedrooms and a main 4pce bathroom. The primary bedroom has a RENOVATED 3pce ENSUITE! The fully finished basement has a 4th bedroom, 3pce bathroom, large rec room and extra storage. Additional features include CENTRAL A/C, UNDERGROUND SPRINKLER, new sump pump, and shingles. Move in ready this phenomenal family home is a must see!

Built in 1990

Essential Information

MLS® #	E4454725
Price	\$499,900
Bedrooms	4
Bathrooms	3.50
Full Baths	3



Half Baths	1
Square Footage	1,690
Acres	0.00
Year Built	1990
Type	Single Family
Sub-Type	Detached Single Family
Style	2 Storey
Status	Active

Community Information

Address	13 Dressler Crest
Area	St. Albert
Subdivision	Deer Ridge (St. Albert)
City	St. Albert
County	ALBERTA
Province	AB
Postal Code	T8N 5X8

Amenities

Amenities	Air Conditioner, Patio, Sprinkler Sys-Underground
Parking	Double Garage Attached

Interior

Interior Features	ensuite bathroom
Appliances	Air Conditioning-Central, Dishwasher-Built-In, Dryer, Garage Control, Garage Opener, Microwave Hood Fan, Refrigerator, Storage Shed, Washer, Window Coverings, Stove-Induction, TV Wall Mount
Heating	Forced Air-1, Natural Gas
Fireplace	Yes
Fireplaces	Brick Facing, Mantel
Stories	3
Has Basement	Yes
Basement	Full, Finished

Exterior

Exterior	Wood, Brick, Vinyl
Exterior Features	Fenced, Flat Site, Fruit Trees/Shrubs, Landscaped, No Back Lane, Public Transportation, Schools, Shopping Nearby
Roof	Asphalt Shingles

Construction	Wood, Brick, Vinyl
Foundation	Concrete Perimeter

Additional Information

Date Listed	August 26th, 2025
Zoning	Zone 24

DATA IS DEEMED RELIABLE BUT IS NOT GUARANTEED ACCURATE BY THE REALTORS® ASSOCIATION OF EDMONTON. COPYRIGHT 2025 BY THE REALTORS® ASSOCIATION OF EDMONTON. ALL RIGHTS RESERVED.Trademarks are owned or controlled by the Canadian Real Estate Association (CREA) and identify real estate professionals who are members of CREA (REALTOR®, REALTORS®) and/or the quality of services they provide (MLS®, Multiple Listing Service®)

Listing information last updated on August 26th, 2025 at 4:32pm MDT