

\$420,000 - 6420 146 Avenue, Edmonton

MLS® #E4454576

\$420,000

4 Bedroom, 2.00 Bathroom, 1,055 sqft

Single Family on 0.00 Acres

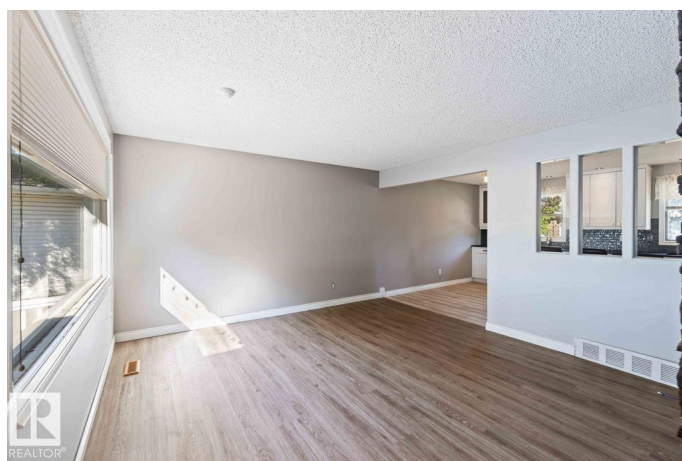
McLeod, Edmonton, AB

Welcome to family friendly McLeod! This fully finished air conditioned bungalow is perfect for young families or seniors wanting to avoid stairs. The main level has an updated kitchen with an island & plenty of cabinets. Enjoy the built in wine fridge to keep beverages cold. The large livingroom has a feature wall with a 65" tv that stays. 3 good sized bedrooms & a 4 pce bath with rainshower complete the main floor. Downstairs you'll find a second kitchen. Perfect for older family members that want their own space. There's an open livingroom & a 4th bedroom, laundry room & another full bathroom with heated floors. The private backyard is fully fenced with no maintenance chainlink. Double oversized heated garage & storage shed. Close to all levels of schools, Londonderry Mall & public transit. With a few minor touchups this could be your perfect forever home!

Built in 1968

Essential Information

MLS® #	E4454576
Price	\$420,000
Bedrooms	4
Bathrooms	2.00
Full Baths	2
Square Footage	1,055



Acres	0.00
Year Built	1968
Type	Single Family
Sub-Type	Detached Single Family
Style	Bungalow
Status	Active

Community Information

Address	6420 146 Avenue
Area	Edmonton
Subdivision	Mcleod
City	Edmonton
County	ALBERTA
Province	AB
Postal Code	T5A 1T3

Amenities

Amenities	Air Conditioner, Deck, Detectors Smoke, No Smoking Home, Natural Gas BBQ Hookup
Parking	Double Garage Detached, Heated, Insulated, Over Sized

Interior

Appliances	Air Conditioning-Central, Alarm/Security System, Dishwasher-Built-In, Dryer, Garburator, Storage Shed, Washer, Water Softener, Window Coverings, Wine/Beverage Cooler, Refrigerators-Two, Stoves-Two, Microwave Hood Fan-Two, TV Wall Mount
Heating	Forced Air-1, Natural Gas
Stories	2
Has Basement	Yes
Basement	Full, Finished

Exterior

Exterior	Wood, Vinyl
Exterior Features	Fenced, Flat Site, Landscaped, Playground Nearby, Public Transportation, Schools, Shopping Nearby
Roof	Asphalt Shingles
Construction	Wood, Vinyl
Foundation	Concrete Perimeter

Additional Information

Date Listed August 25th, 2025

Days on Market 1

Zoning Zone 02

DATA IS DEEMED RELIABLE BUT IS NOT GUARANTEED ACCURATE BY THE REALTORS® ASSOCIATION OF EDMONTON. COPYRIGHT 2025 BY THE REALTORS® ASSOCIATION OF EDMONTON. ALL RIGHTS RESERVED. Trademarks are owned or controlled by the Canadian Real Estate Association (CREA) and identify real estate professionals who are members of CREA (REALTOR®, REALTORS®) and/or the quality of services they provide (MLS®, Multiple Listing Service®)

Listing information last updated on August 26th, 2025 at 4:47pm MDT