

\$315,000 - N/A, Edmonton

MLS® #E4454474

\$315,000

2 Bedroom, 2.50 Bathroom, 1,141 sqft

Condo / Townhouse on 0.00 Acres

The Hamptons, Edmonton, AB

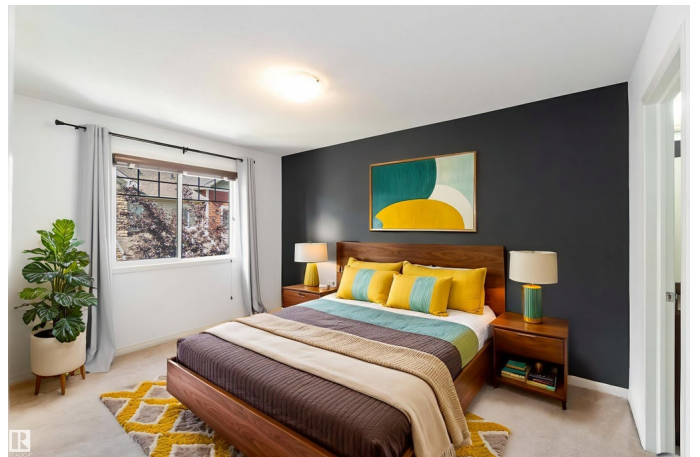
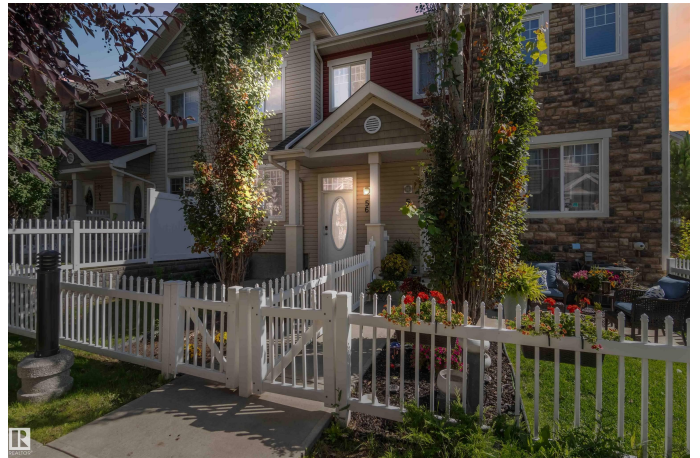
Welcome to the Hamptons! This immaculate 2 storey townhome blends style and comfort in a family-friendly community surrounded by parks, trails and schools. Offering 2 bedrooms and 2.5 baths, it greets you with a private fenced garden and great curb appeal. Tucked away from main roads, the front yard is a quiet spot for morning coffee. Inside, large windows fill the home with natural light, highlighting hardwood floors, fresh paint, central AIR CONDITIONING and Hunter Douglas window coverings. The kitchen features quartz counters, tiled backsplash, pantry, island seating and stainless steel appliances including a newer fridge and dishwasher, with access to a low-maintenance balcony. Upstairs are two spacious primary suites, each with its own ensuite and walk-in closet. The lower level offers laundry, storage and direct access to the DOUBLE ATTACHED GARAGE. With shopping, dining and transit nearby plus quick routes to Anthony Henday, Whitemud, Hwy 16 and QE2, this home is available for quick possession!

Built in 2012

Essential Information

MLS® # E4454474

Price \$315,000



Bedrooms	2
Bathrooms	2.50
Full Baths	2
Half Baths	1
Square Footage	1,141
Acres	0.00
Year Built	2012
Type	Condo / Townhouse
Sub-Type	Townhouse
Style	2 Storey
Status	Active

Community Information

Address	N/A
Area	Edmonton
Subdivision	The Hamptons
City	Edmonton
County	ALBERTA
Province	AB
Postal Code	T6M 0M5

Amenities

Amenities	See Remarks
Parking	Double Garage Attached

Interior

Interior Features	ensuite bathroom
Appliances	Air Conditioning-Central, Dishwasher-Built-In, Dryer, Microwave Hood Fan, Refrigerator, Stove-Electric, Washer, Window Coverings, Curtains and Blinds
Heating	Forced Air-1, Natural Gas
Stories	3
Has Basement	Yes
Basement	Full, Finished

Exterior

Exterior	Wood, Stone, Vinyl
Exterior Features	Fenced, Golf Nearby, Low Maintenance Landscape, Playground Nearby, Public Transportation, Schools, Shopping Nearby

Roof	Asphalt Shingles
Construction	Wood, Stone, Vinyl
Foundation	Concrete Perimeter

Additional Information

Date Listed	August 22nd, 2025
Days on Market	2
Zoning	Zone 58
HOA Fees	187.88
HOA Fees Freq.	Annually
Condo Fee	\$244

DATA IS DEEMED RELIABLE BUT IS NOT GUARANTEED ACCURATE BY THE REALTORS® ASSOCIATION OF EDMONTON. COPYRIGHT 2025 BY THE REALTORS® ASSOCIATION OF EDMONTON. ALL RIGHTS RESERVED.Trademarks are owned or controlled by the Canadian Real Estate Association (CREA) and identify real estate professionals who are members of CREA (REALTOR®, REALTORS®) and/or the quality of services they provide (MLS®, Multiple Listing Service®)

Listing information last updated on August 24th, 2025 at 5:17am MDT