

\$630,000 - 10403 65 Avenue, Edmonton

MLS® #E4452812

\$630,000

5 Bedroom, 2.00 Bathroom, 1,018 sqft
Single Family on 0.00 Acres

Allendale, Edmonton, AB

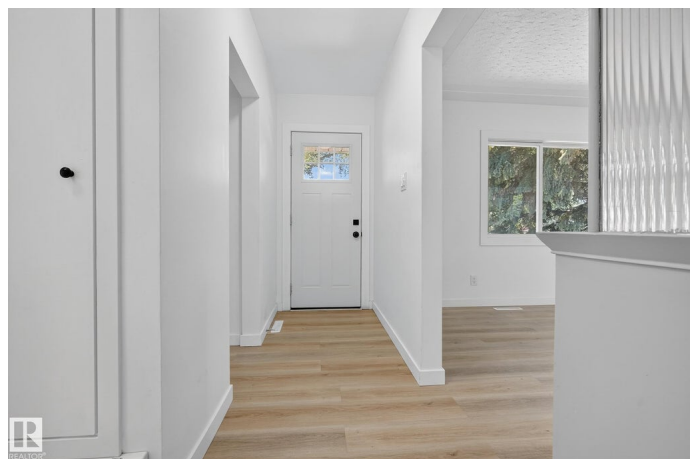
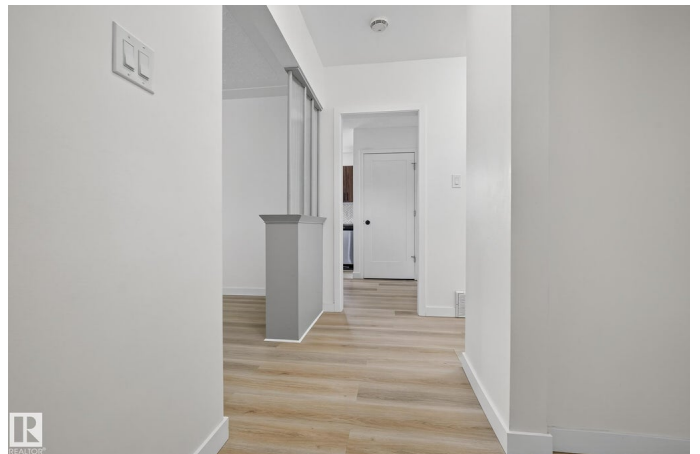
Say hello to this smart buy! This 5 bedroom home has a 3 bedroom LEGAL SUITE!! Perfect for someone wanting a mortgage helper or a savvy investor! The home has undergone MAJOR RENOVATIONS and is move-in ready!! Features new kitchens, bathrooms, flooring, paint, the list goes on and on... Perfectly located close to the U of A, Southgate, Allendale and Strathcona schools, MAJOR shopping and so much more! With a private yard and an oversized double garage - this home has a lot to offer!

Built in 1956

Essential Information

| | |
|----------------|------------------------|
| MLS® # | E4452812 |
| Price | \$630,000 |
| Bedrooms | 5 |
| Bathrooms | 2.00 |
| Full Baths | 2 |
| Square Footage | 1,018 |
| Acres | 0.00 |
| Year Built | 1956 |
| Type | Single Family |
| Sub-Type | Detached Single Family |
| Style | Bungalow |
| Status | Active |

Community Information



| | |
|-------------|-----------------|
| Address | 10403 65 Avenue |
| Area | Edmonton |
| Subdivision | Allendale |
| City | Edmonton |
| County | ALBERTA |
| Province | AB |
| Postal Code | T6H 1V2 |

Amenities

| | |
|----------------|------------------------|
| Amenities | See Remarks |
| Parking Spaces | 4 |
| Parking | Double Garage Detached |

Interior

| | |
|--------------|------------------------------------------------------------------------------------------------------------------|
| Appliances | Dishwasher-Built-In, Dryer, Hood Fan, Stacked Washer/Dryer, Stove-Electric, Stove-Gas, Washer, Refrigerators-Two |
| Heating | Forced Air-2, Natural Gas |
| Stories | 2 |
| Has Suite | Yes |
| Has Basement | Yes |
| Basement | Full, Finished |

Exterior

| | |
|-------------------|-----------------------------------------------------------------------------------------------------|
| Exterior | Wood, Stucco |
| Exterior Features | Back Lane, Flat Site, Landscaped, Low Maintenance Landscape, Public Transportation, Shopping Nearby |
| Roof | Asphalt Shingles |
| Construction | Wood, Stucco |
| Foundation | Concrete Perimeter |

Additional Information

| | |
|----------------|-------------------|
| Date Listed | August 12th, 2025 |
| Days on Market | 2 |
| Zoning | Zone 15 |

DATA IS DEEMED RELIABLE BUT IS NOT GUARANTEED ACCURATE BY THE REALTORS® ASSOCIATION OF EDMONTON. COPYRIGHT 2025 BY THE REALTORS® ASSOCIATION OF EDMONTON. ALL RIGHTS RESERVED.Trademarks are owned or controlled by the Canadian Real Estate Association (CREA) and identify real estate professionals who are members of CREA (REALTOR®, REALTORS®) and/or the quality of services they provide (MLS®, Multiple Listing Service®)

Listing information last updated on August 14th, 2025 at 7:32am MDT