

## \$135,000 - 11338 83 Street, Edmonton

MLS® #E4446312

**\$135,000**

0 Bedroom, 0.00 Bathroom,  
Single Family on 0.00 Acres

Parkdale (Edmonton), Edmonton, AB

GREAT OPPORTUNITY FOR FUTURE DEVELOPMENT OR INFILLED OR INVESTMENT. ZONE RF3. Please note \* property is sold "as is where is at time of possession" \*. No warranties or representations.

### Essential Information

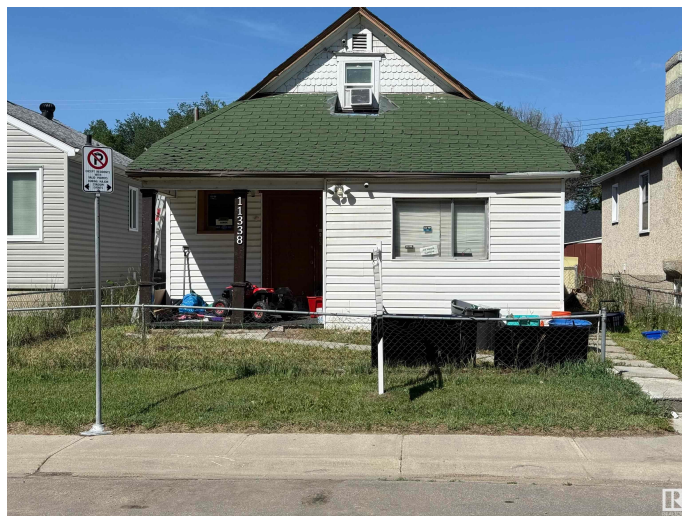
MLS® #	E4446312
Price	\$135,000
Bathrooms	0.00
Acres	0.00
Type	Single Family
Sub-Type	Vacant Lot/Land
Status	Active

### Community Information

Address	11338 83 Street
Area	Edmonton
Subdivision	Parkdale (Edmonton)
City	Edmonton
County	ALBERTA
Province	AB
Postal Code	T5B 2Y1

### Exterior

Exterior Features Flat Site, Public Transportation, Schools, Shopping Nearby



**Additional Information**

Date Listed                July 7th, 2025  
Days on Market        1  
Zoning                    Zone 05

DATA IS DEEMED RELIABLE BUT IS NOT GUARANTEED ACCURATE BY THE REALTORS® ASSOCIATION OF EDMONTON. COPYRIGHT 2025 BY THE REALTORS® ASSOCIATION OF EDMONTON. ALL RIGHTS RESERVED.Trademarks are owned or controlled by the Canadian Real Estate Association (CREA) and identify real estate professionals who are members of CREA (REALTOR®, REALTORS®) and/or the quality of services they provide (MLS®, Multiple Listing Service®)  
Listing information last updated on July 8th, 2025 at 1:03pm MDT