

Courtesy Of Norm Cholak Of RE/MAX River City

\$248,000 - 215 1589 Glastonbury Boulevard, Edmonton

MLS® #E4446285

\$248,000

2 Bedroom, 1.50 Bathroom, 909 sqft
Condo / Townhouse on 0.00 Acres

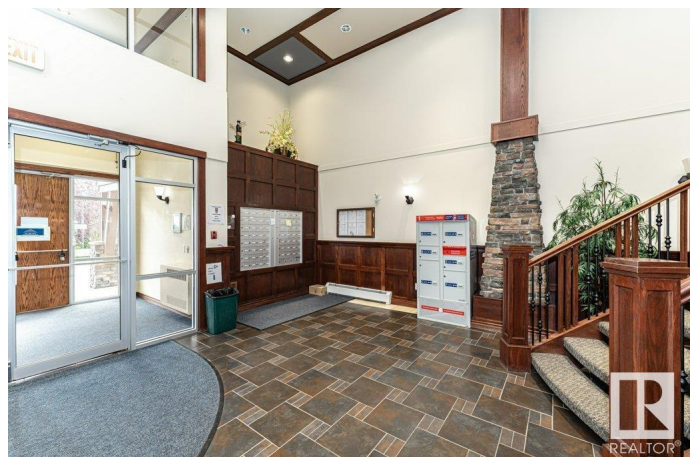
Glastonbury, Edmonton, AB

Impeccably maintained Adult 18+ Condo in the sought after Glastonbury neighborhood, showcasing a sleek design with Heated Titled Underground Parking, assigned storage cage, and a Heat Pump for efficient Heating and Cooling. This residence boasts an Open Concept layout, kitchen with Stainless Steel appliances, a East facing living room with large windows letting in loads of natural light, plus access to a spacious covered balcony that includes gas outlet for BBQ. The Primary Suite features duel closets and a 4-piece ensuite. A 2nd bedroom/office, 2 piece bath and laundry facilities complete the suite. Residents will appreciate the building's top-tier amenities including a well-equipped exercise room, guest suite, social gathering area and more. Ideally situated near schools, shopping facilities, public transportation, scenic walking trails, and an array of conveniences for a sophisticated urban lifestyle.

Built in 2006

Essential Information

MLS® #	E4446285
Price	\$248,000
Bedrooms	2
Bathrooms	1.50
Full Baths	1



Half Baths	1
Square Footage	909
Acres	0.00
Year Built	2006
Type	Condo / Townhouse
Sub-Type	Lowrise Apartment
Style	Single Level Apartment
Status	Active

Community Information

Address	215 1589 Glastonbury Boulevard
Area	Edmonton
Subdivision	Glastonbury
City	Edmonton
County	ALBERTA
Province	AB
Postal Code	T5T 2V1

Amenities

Amenities	Deck, Exercise Room, Guest Suite, Parking-Visitor, Secured Parking, Social Rooms, Storage Cage, Natural Gas BBQ Hookup
Parking	Heated, Underground

Interior

Interior Features	ensuite bathroom
Appliances	Dishwasher-Built-In, Dryer, Garage Control, Oven-Microwave, Refrigerator, Stove-Electric, Washer, Window Coverings
Heating	Heat Pump, Natural Gas
# of Stories	4
Stories	1
Has Basement	Yes
Basement	None, No Basement

Exterior

Exterior	Wood, Stucco, Vinyl
Exterior Features	Landscaped, Public Transportation, Schools, Shopping Nearby
Roof	Asphalt Shingles
Construction	Wood, Stucco, Vinyl
Foundation	Concrete Perimeter

Additional Information

Date Listed	July 7th, 2025
Days on Market	44
Zoning	Zone 58
Condo Fee	\$501

DATA IS DEEMED RELIABLE BUT IS NOT GUARANTEED ACCURATE BY THE REALTORS® ASSOCIATION OF EDMONTON. COPYRIGHT 2025 BY THE REALTORS® ASSOCIATION OF EDMONTON. ALL RIGHTS RESERVED. Trademarks are owned or controlled by the Canadian Real Estate Association (CREA) and identify real estate professionals who are members of CREA (REALTOR®, REALTORS®) and/or the quality of services they provide (MLS®, Multiple Listing Service®)

Listing information last updated on August 20th, 2025 at 8:47am MDT