

Courtesy Of Michael J Grue Of Century 21 Masters

\$235,900 - 433 148 Ebbers Boulevard, Edmonton

MLS® #E4446242

\$235,900

2 Bedroom, 2.00 Bathroom, 841 sqft

Condo / Townhouse on 0.00 Acres

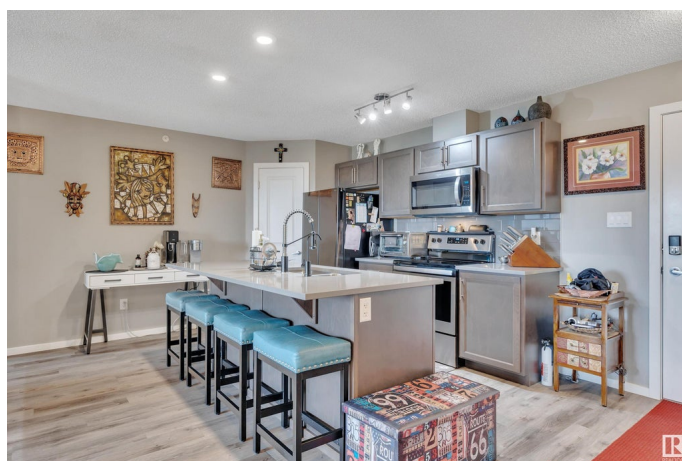
Ebbers, Edmonton, AB

Welcome to the Elements at Manning! This top-floor, 2 bed, 2 bath condo offers an open layout with a modern kitchen featuring stainless steel appliances, quartz counters, and a spacious pantry. The living room leads to a private covered balcony with views of green space and walking trails. The primary bedroom has a walk-through closet and 4pc ensuite, while the second bedroom is perfect for guests or a home office. Enjoy in-suite laundry, underground titled parking, and an extra surface stall. Located in a vibrant, growing community close to Clareview Rec Centre, Manning Town Centre, LRT, and major routes. Parks, trails, and a playground are just steps away for your active lifestyle. A great fit for first-time buyers, investors, or those looking to downsize while enjoying comfort and convenience in a well-maintained building. Move-in ready and waiting for you!

Built in 2018

Essential Information

MLS® #	E4446242
Price	\$235,900
Bedrooms	2
Bathrooms	2.00
Full Baths	2
Square Footage	841



Acres	0.00
Year Built	2018
Type	Condo / Townhouse
Sub-Type	Lowrise Apartment
Style	Single Level Apartment
Status	Active

Community Information

Address	433 148 Ebbers Boulevard
Area	Edmonton
Subdivision	Ebbers
City	Edmonton
County	ALBERTA
Province	AB
Postal Code	T5Y 4A4

Amenities

Amenities	Deck, No Smoking Home, Parking-Visitor, Security Door, Sprinkler System-Fire
Parking Spaces	2
Parking	Heated, Stall, Underground

Interior

Interior Features	ensuite bathroom
Appliances	Appliances Negotiable, Dishwasher-Built-In, Dryer, Refrigerator-Energy Star, Stove-Electric, Washer, See Remarks
Heating	Hot Water, Natural Gas
# of Stories	4
Stories	4
Has Basement	Yes
Basement	None, No Basement

Exterior

Exterior	Wood, Vinyl
Exterior Features	Golf Nearby, Park/Reserve, Playground Nearby, Public Transportation, Shopping Nearby
Roof	Asphalt Shingles
Construction	Wood, Vinyl
Foundation	Concrete Perimeter

Additional Information

Date Listed	July 7th, 2025
Days on Market	2
Zoning	Zone 02
Condo Fee	\$488

DATA IS DEEMED RELIABLE BUT IS NOT GUARANTEED ACCURATE BY THE REALTORS® ASSOCIATION OF EDMONTON. COPYRIGHT 2025 BY THE REALTORS® ASSOCIATION OF EDMONTON. ALL RIGHTS RESERVED.Trademarks are owned or controlled by the Canadian Real Estate Association (CREA) and identify real estate professionals who are members of CREA (REALTOR®, REALTORS®) and/or the quality of services they provide (MLS®, Multiple Listing Service®)

Listing information last updated on July 9th, 2025 at 10:47am MDT