

\$778,000 - 972 Wallbridge Place, Edmonton

MLS® #E4446022

\$778,000

4 Bedroom, 3.00 Bathroom, 1,944 sqft

Single Family on 0.00 Acres

Oleskiw, Edmonton, AB

Discover your dream home in the highly sought-after "The Country Club" neighborhood of Oleskiw, Edmonton. This spacious, fully renovated bungalow offers over 3,700 sq ft of luxurious living space, perfectly blending elegance and functionality. Step inside to a sun-drenched living room, boasting large windows updated in 2016 for abundant natural light. The recent renovations truly elevate this property, featuring a stunning gourmet kitchen with granite countertops and stainless steel appliances. Indulge in the primary en-suite bathroom, a true spa-like retreat with heated floors, ideal for chilly mornings. The fully finished basement, complete with new carpeting (2024), is designed for entertaining. It includes a built-in cabinet and two wine/beverage coolers, making it the perfect spot for social gatherings. With two additional bedrooms and a convenient Jack-and-Jill bathroom, there's ample space for family and guests. Enjoy an unparalleled lifestyle in this prime location.

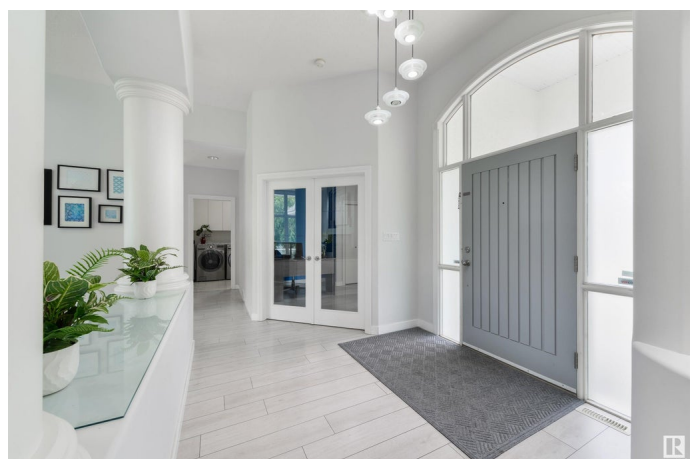
Built in 1997

Essential Information

MLS® # E4446022

Price \$778,000

Bedrooms 4



| | |
|----------------|------------------------|
| Bathrooms | 3.00 |
| Full Baths | 3 |
| Square Footage | 1,944 |
| Acres | 0.00 |
| Year Built | 1997 |
| Type | Single Family |
| Sub-Type | Detached Single Family |
| Style | Bungalow |
| Status | Active |

Community Information

| | |
|-------------|----------------------|
| Address | 972 Wallbridge Place |
| Area | Edmonton |
| Subdivision | Oleskiw |
| City | Edmonton |
| County | ALBERTA |
| Province | AB |
| Postal Code | T6M 2L7 |

Amenities

| | |
|----------------|--|
| Amenities | Deck, Detectors Smoke, Fire Pit, No Animal Home, No Smoking Home, Vaulted Ceiling, Vinyl Windows |
| Parking Spaces | 4 |
| Parking | Double Garage Attached |

Interior

| | |
|-------------------|---|
| Interior Features | ensuite bathroom |
| Appliances | Dishwasher-Built-In, Dryer, Hood Fan, Refrigerator, Stove-Electric, Washer, Wine/Beverage Cooler, Projector |
| Heating | Forced Air-2, Natural Gas |
| Fireplace | Yes |
| Fireplaces | Glass Door |
| Stories | 2 |
| Has Basement | Yes |
| Basement | Full, Finished |

Exterior

| | |
|-------------------|---|
| Exterior | Wood, Stucco |
| Exterior Features | Cul-De-Sac, Fenced, Low Maintenance Landscape, Playground Nearby, |

| | |
|--------------|------------------------------------|
| | Public Transportation, See Remarks |
| Roof | Cedar Shakes |
| Construction | Wood, Stucco |
| Foundation | Concrete Perimeter |

School Information

| | |
|------------|--------------------------|
| Elementary | Patricia Heights |
| Middle | Hillcrest Jr High School |
| High | Jasper Place High School |

Additional Information

| | |
|----------------|----------------|
| Date Listed | July 3rd, 2025 |
| Days on Market | 10 |
| Zoning | Zone 22 |

DATA IS DEEMED RELIABLE BUT IS NOT GUARANTEED ACCURATE BY THE REALTORS® ASSOCIATION OF EDMONTON. COPYRIGHT 2025 BY THE REALTORS® ASSOCIATION OF EDMONTON. ALL RIGHTS RESERVED. Trademarks are owned or controlled by the Canadian Real Estate Association (CREA) and identify real estate professionals who are members of CREA (REALTOR®, REALTORS®) and/or the quality of services they provide (MLS®, Multiple Listing Service®)

Listing information last updated on July 13th, 2025 at 4:47pm MDT