

\$129,900 - 511 13910 Stony Plain Road, Edmonton

MLS® #E4440508

\$129,900

2 Bedroom, 1.00 Bathroom, 856 sqft

Condo / Townhouse on 0.00 Acres

Glenora, Edmonton, AB

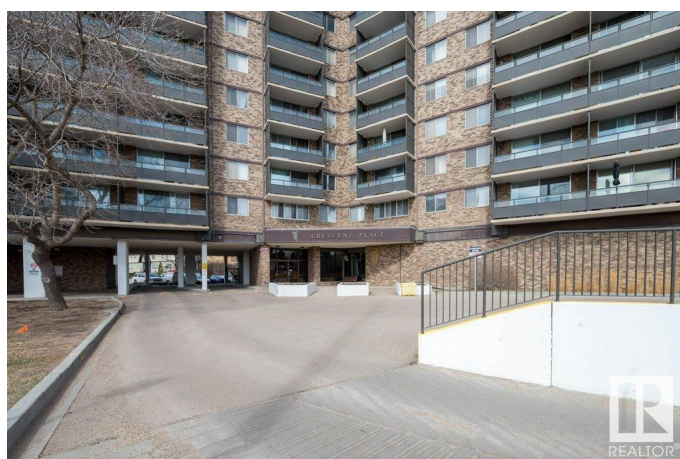
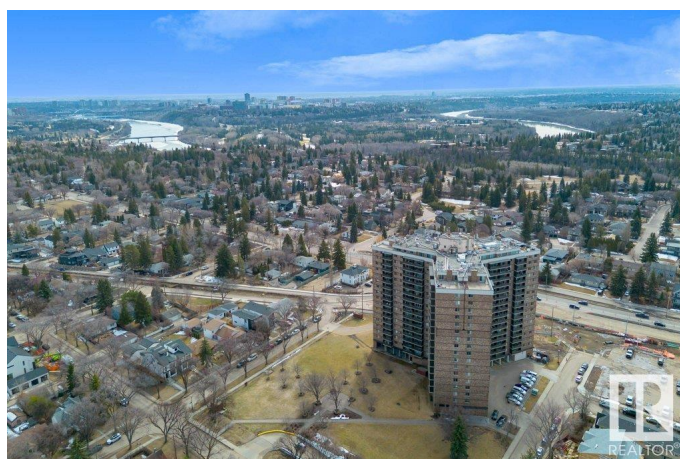
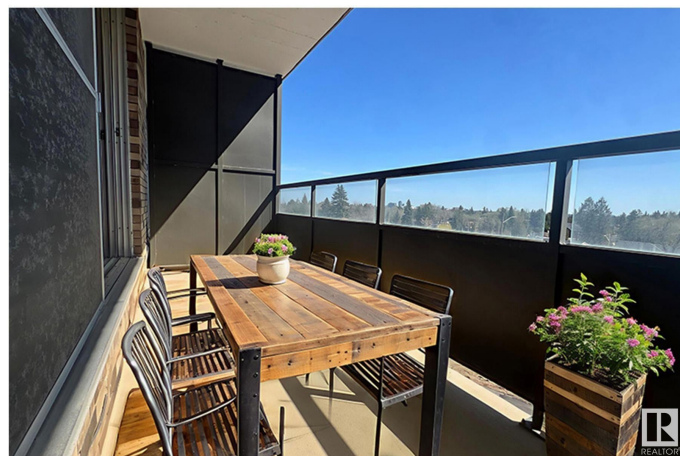
Endless perks, CONCRETE CONSTRUCTION, immediate possession! - Whether you're a first-time buyer, investor, or simply ready to downsize, this 856 Sq Ft 2-bedroom condo in Glenora offers an unbeatable lifestyle with top-tier amenities at your fingertips and ALL UTILITIES INCLUDED! Stepping into this 5th-floor gem you'll be greeted by a bright, sun-filled space brimming with character. The generous living and dining area connects effortlessly to a spacious SOUTH FACING balcony with beautiful CITY VIEWS. Functional galley kitchen, has NEW COUNTER TOPS & sleek white backsplash, offering tons of storage. The spacious primary bedroom has ample closet space, and the versatile second bedroom is perfect for a home office! In-suite storage, on site management office for security, PLUS a fully equipped exercise room, indoor pool, sauna, & games room. Easy access to public transit, & conveniently located near Edmonton's stunning River Valley, the High Street shops & W.E.M! Located directly on future Valley Line West!

Built in 1969

Essential Information

MLS® # E4440508

Price \$129,900



Bedrooms	2
Bathrooms	1.00
Full Baths	1
Square Footage	856
Acres	0.00
Year Built	1969
Type	Condo / Townhouse
Sub-Type	Apartment High Rise
Style	Single Level Apartment
Status	Active

Community Information

Address	511 13910 Stony Plain Road
Area	Edmonton
Subdivision	Glenora
City	Edmonton
County	ALBERTA
Province	AB
Postal Code	T5N 3R2

Amenities

Amenities	Pool-Indoor, Recreation Room/Centre, Sauna; Swirlpool; Steam, Security Door, Social Rooms, Storage-In-Suite
Parking	See Remarks
Has Pool	Yes

Interior

Appliances	Dishwasher-Built-In, Oven-Microwave, Refrigerator, Stove-Electric, Window Coverings
Heating	Baseboard, Water
# of Stories	18
Stories	1
Has Basement	Yes
Basement	None, No Basement

Exterior

Exterior	Concrete, Brick
Exterior Features	Playground Nearby, Public Transportation, Schools, Shopping Nearby, See Remarks

Roof	Tar & Gravel
Construction	Concrete, Brick
Foundation	Concrete Perimeter

Additional Information

Date Listed	June 5th, 2025
Days on Market	12
Zoning	Zone 11
Condo Fee	\$791

DATA IS DEEMED RELIABLE BUT IS NOT GUARANTEED ACCURATE BY THE REALTORS® ASSOCIATION OF EDMONTON. COPYRIGHT 2025 BY THE REALTORS® ASSOCIATION OF EDMONTON. ALL RIGHTS RESERVED.Trademarks are owned or controlled by the Canadian Real Estate Association (CREA) and identify real estate professionals who are members of CREA (REALTOR®, REALTORS®) and/or the quality of services they provide (MLS®, Multiple Listing Service®)

Listing information last updated on June 17th, 2025 at 9:17am MDT