

## \$153,800 - 410 270 Mcconachie Drive, Edmonton

MLS® #E4438413

**\$153,800**

1 Bedroom, 1.00 Bathroom, 586 sqft

Condo / Townhouse on 0.00 Acres

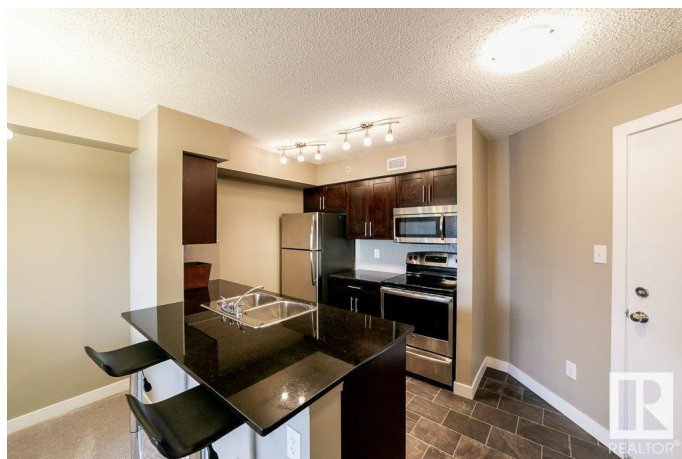
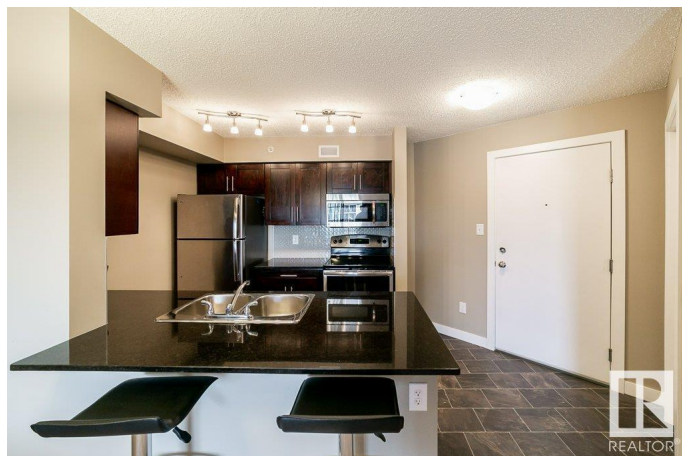
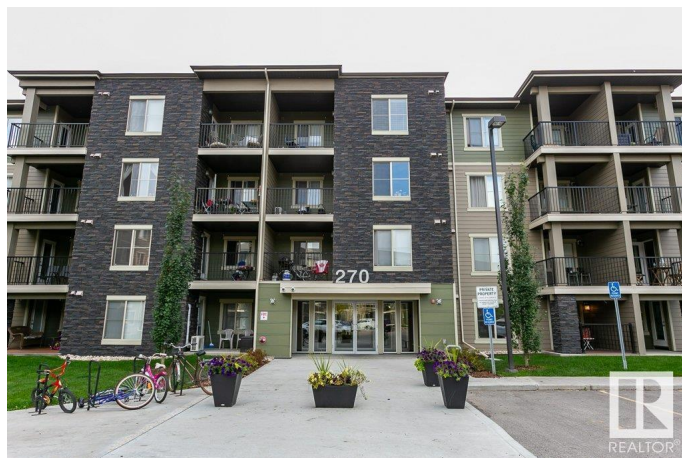
McConachie Area, Edmonton, AB

Welcome to your new home in McConachie! This one bedroom plus den condo on the Top Floor is 586 sq ft. The kitchen has rich, brown cabinets, S/S appliances, and granite countertops with room for bar stools at the peninsula counter. The dining area has room for a dinette set. The living room is spacious and leads to the balcony which has room for your BBQ and/or a bistro set. The den is located just outside the primary bedroom and 4 piece bathroom, which has granite countertops. The den is the perfect spot for your desk or even a daybed or futon for overnight guests. The stacked washer and dryer is conveniently located in a bathroom closet. A portable A/C unit is included. While tucked away in the McConachie area, this condo is located minutes away from the Anthony Henday, grocery, gyms, coffee shops, shopping, banks, and more. This unit is perfect for a first time buyer or investor.

Built in 2014

### Essential Information

MLS® #	E4438413
Price	\$153,800
Bedrooms	1
Bathrooms	1.00
Full Baths	1



Square Footage	586
Acres	0.00
Year Built	2014
Type	Condo / Townhouse
Sub-Type	Lowrise Apartment
Style	Single Level Apartment
Status	Active

### Community Information

Address	410 270 Mcconachie Drive
Area	Edmonton
Subdivision	McConachie Area
City	Edmonton
County	ALBERTA
Province	AB
Postal Code	T5Y 3N4

### Amenities

Amenities	No Animal Home, No Smoking Home, Parking-Visitor
Parking	Stall

### Interior

Appliances	Air Conditioner-Window, Dishwasher-Built-In, Dryer, Microwave Hood Fan, Refrigerator, Stacked Washer/Dryer, Stove-Electric, Window Coverings
Heating	Hot Water, Natural Gas
# of Stories	4
Stories	1
Has Basement	Yes
Basement	None, No Basement

### Exterior

Exterior	Wood, Composition
Exterior Features	Paved Lane, Playground Nearby, Public Transportation, Schools, Shopping Nearby
Roof	Asphalt Shingles
Construction	Wood, Composition
Foundation	Concrete Perimeter

### Additional Information

Date Listed	May 24th, 2025
Days on Market	95
Zoning	Zone 03
Condo Fee	\$358

DATA IS DEEMED RELIABLE BUT IS NOT GUARANTEED ACCURATE BY THE REALTORS® ASSOCIATION OF EDMONTON. COPYRIGHT 2025 BY THE REALTORS® ASSOCIATION OF EDMONTON. ALL RIGHTS RESERVED. Trademarks are owned or controlled by the Canadian Real Estate Association (CREA) and identify real estate professionals who are members of CREA (REALTOR®, REALTORS®) and/or the quality of services they provide (MLS®, Multiple Listing Service®)

Listing information last updated on August 27th, 2025 at 1:02am MDT