

## \$699,000 - 19 Rosa Crescent, St. Albert

MLS® #E4435589

**\$699,000**

3 Bedroom, 3.50 Bathroom, 2,281 sqft

Single Family on 0.00 Acres

Riverside (St. Albert), St. Albert, AB

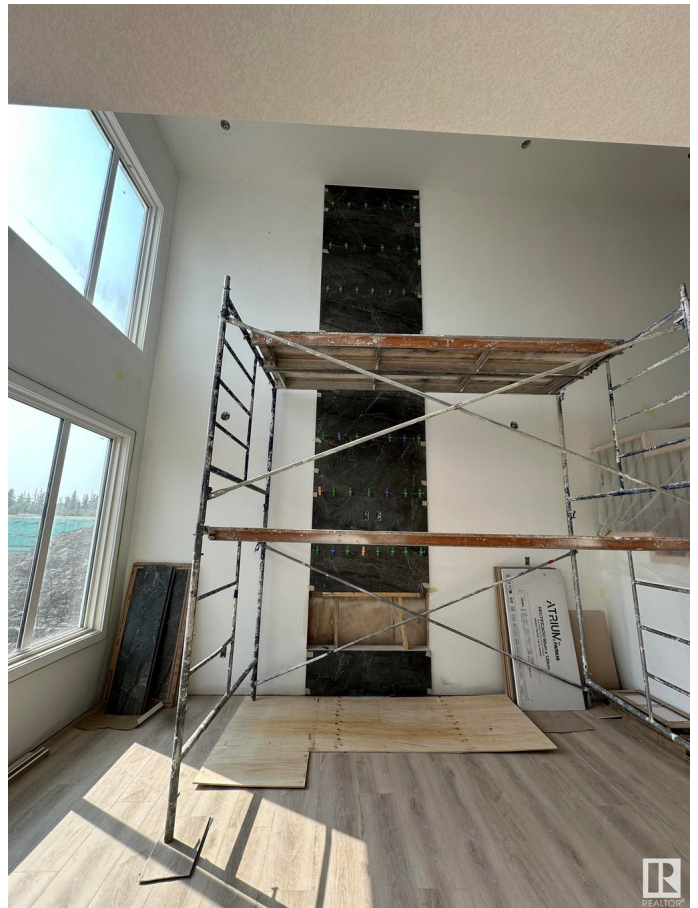
TWO MASTER BEDROOMS ON SECOND FLOOR.....Master bedroom with 5 piece En-suite has custom shower and soaker tub. 2nd Master bedroom with Standing shower. A picturesque community with walking trails, beautiful natural creek by Big Lake. The Anthony Henday is just 5 minutes away. Much desired floor plan for today's modern family, boasting 3 spacious bedrooms on Second floor. Shake panle Custom kitchen with herringbone backsplash. Quartz counter throughout. Open-to-below 19 feet high ceilings in the Great room with Italian tiles and wood paneling on both sides all the way Ceilings. Huge windows with extra detailing. Triple Pane windows with Premium level finishing package from the Builder. Bonus room with built in cabinets with Arc finish on top. Extra pot lights & luxurious lighting package. Gorgeous luxury vinyl plank flooring. Kitchen is anchored by extended eat-on Centre island, quartz countertops, dinette nook & abundance of cabinetry with insert hood fan. Feature wall in the Foyer area & wall lights.

Built in 2025

### Essential Information

MLS® # E4435589

Price \$699,000



Bedrooms	3
Bathrooms	3.50
Full Baths	3
Half Baths	1
Square Footage	2,281
Acres	0.00
Year Built	2025
Type	Single Family
Sub-Type	Detached Single Family
Style	2 Storey
Status	Active

### Community Information

Address	19 Rosa Crescent
Area	St. Albert
Subdivision	Riverside (St. Albert)
City	St. Albert
County	ALBERTA
Province	AB
Postal Code	T8N 7Y4

### Amenities

Amenities	Deck, 9 ft. Basement Ceiling
Parking	Double Garage Attached

### Interior

Interior Features	ensuite bathroom
Appliances	Garage Opener, Hood Fan
Heating	Forced Air-1, Natural Gas
Fireplaces	Mantel
Stories	2
Has Basement	Yes
Basement	Full, Unfinished

### Exterior

Exterior	Wood, Vinyl
Exterior Features	Level Land, No Through Road, Playground Nearby, Schools, Shopping Nearby
Roof	Asphalt Shingles

Construction	Wood, Vinyl
Foundation	Concrete Perimeter

### Additional Information

Date Listed	May 9th, 2025
Days on Market	110
Zoning	Zone 24



DATA IS DEEMED RELIABLE BUT IS NOT GUARANTEED ACCURATE BY THE REALTORS® ASSOCIATION OF EDMONTON. COPYRIGHT 2025 BY THE REALTORS® ASSOCIATION OF EDMONTON. ALL RIGHTS RESERVED. Trademarks are owned or controlled by the Canadian Real Estate Association (CREA) and identify real estate professionals who are members of CREA (REALTOR®, REALTORS®) and/or the quality of services they provide (MLS®, Multiple Listing Service®)

Listing information last updated on August 27th, 2025 at 5:32pm MDT