

\$425,000 - 542 Klarvatten Lake Wynd, Edmonton

MLS® #E4435310

\$425,000

4 Bedroom, 3.00 Bathroom, 1,204 sqft

Single Family on 0.00 Acres

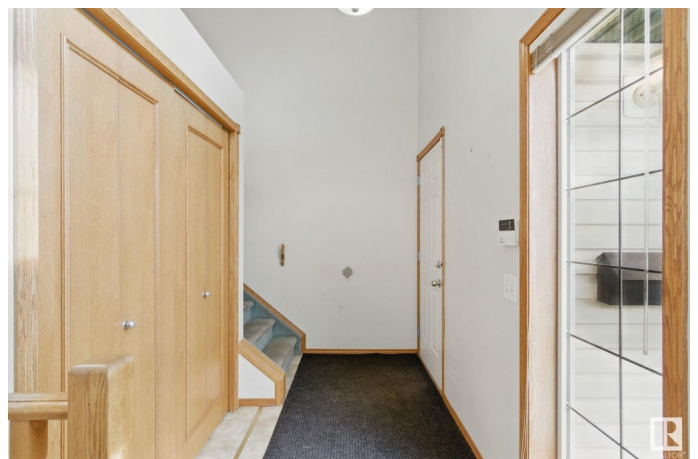
Klarvatten, Edmonton, AB

Welcome to this two kitchen bi-level home in the family-friendly community of Klarvatten. This bright and spacious property offers a functional layout with beautiful hardwood floors and plenty of natural light. The main level features three generous bedrooms and two full 4-piece bathrooms, along with an inviting living area and a separate kitchen and dining space. The fully finished basement includes a separate entrance, a second kitchen, a large recreation area, one additional bedroom, and another full 4-piece bathroom. Perfect for extended family or out of town guests. The house is also equipped with a full house sound system. With its versatile layout and great location, this home has something for everyone!

Built in 2002

Essential Information

| | |
|----------------|-----------|
| MLS® # | E4435310 |
| Price | \$425,000 |
| Bedrooms | 4 |
| Bathrooms | 3.00 |
| Full Baths | 3 |
| Square Footage | 1,204 |
| Acres | 0.00 |
| Year Built | 2002 |



| | |
|----------|------------------------|
| Type | Single Family |
| Sub-Type | Detached Single Family |
| Style | Bi-Level |
| Status | Active |

Community Information

| | |
|-------------|--------------------------|
| Address | 542 Klarvatten Lake Wynd |
| Area | Edmonton |
| Subdivision | Klarvatten |
| City | Edmonton |
| County | ALBERTA |
| Province | AB |
| Postal Code | T5Z 3M1 |

Amenities

| | |
|-----------|--|
| Amenities | Deck, Detectors Smoke, Hot Water Natural Gas |
| Parking | Double Garage Attached |

Interior

| | |
|-------------------|--|
| Interior Features | ensuite bathroom |
| Appliances | Dryer, Oven-Microwave, Washer, Refrigerators-Two, Stoves-Two, Dishwasher-Two, Microwave Hood Fan-Two |
| Heating | Forced Air-1, Natural Gas |
| Stories | 2 |
| Has Suite | Yes |
| Has Basement | Yes |
| Basement | Full, Finished |

Exterior

| | |
|-------------------|---|
| Exterior | Wood, Vinyl |
| Exterior Features | Fenced, Golf Nearby, No Back Lane, Playground Nearby, Public Transportation, Schools, Shopping Nearby |
| Roof | Asphalt Shingles |
| Construction | Wood, Vinyl |
| Foundation | Concrete Perimeter |

Additional Information

| | |
|----------------|---------------|
| Date Listed | May 8th, 2025 |
| Days on Market | 1 |

Zoning

Zone 28

DATA IS DEEMED RELIABLE BUT IS NOT GUARANTEED ACCURATE BY THE REALTORS® ASSOCIATION OF EDMONTON. COPYRIGHT 2025 BY THE REALTORS® ASSOCIATION OF EDMONTON. ALL RIGHTS RESERVED. Trademarks are owned or controlled by the Canadian Real Estate Association (CREA) and identify real estate professionals who are members of CREA (REALTOR®, REALTORS®) and/or the quality of services they provide (MLS®, Multiple Listing Service®)

Listing information last updated on May 9th, 2025 at 3:02pm MDT