

\$449,000 - 15138 26 Street, Edmonton

MLS® #E4435032

\$449,000

3 Bedroom, 2.50 Bathroom, 1,438 sqft
Single Family on 0.00 Acres

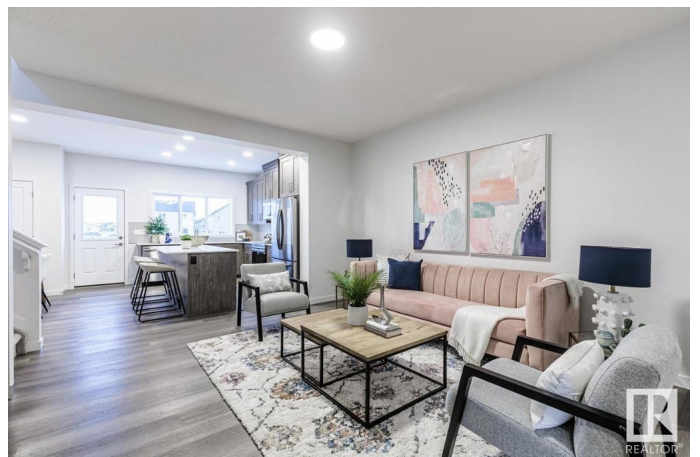
Fraser, Edmonton, AB

This stunning half duplex home, built by EXCEL Homes, offers the perfect blend of style and functionality. Featuring a double front attached garage, side entrance, and ample parking, this home is designed for convenience. Enjoy top-tier upgrades, including all appliances (washer & dryer included), knockdown ceilings, luxury vinyl plank flooring, an upgraded ensuite bathroom, and a second-floor laundry room. The kitchen is a showstopper, showcasing a modern design with an island, full-height cabinetry, quartz countertops, electric stove, built-in microwave, stainless steel appliances, and a pantry. The separate master bedroom boasts a walk-in closet and a private ensuite. Additionally, every EXCEL home is GREEN BUILT CANADA certified, ensuring a healthier, more durable living space with a lower environmental impact. This home truly has it all!

Built in 2022

Essential Information

MLS® #	E4435032
Price	\$449,000
Bedrooms	3
Bathrooms	2.50
Full Baths	2



Half Baths	1
Square Footage	1,438
Acres	0.00
Year Built	2022
Type	Single Family
Sub-Type	Half Duplex
Style	2 Storey
Status	Active

Community Information

Address	15138 26 Street
Area	Edmonton
Subdivision	Fraser
City	Edmonton
County	ALBERTA
Province	AB
Postal Code	T5Y 3Y5

Amenities

Amenities	Ceiling 9 ft., No Animal Home, No Smoking Home, HRV System
Parking Spaces	4
Parking	Double Garage Attached

Interior

Interior Features	ensuite bathroom
Appliances	Dishwasher-Built-In, Dryer, Garage Control, Garage Opener, Microwave Hood Fan, Oven-Built-In, Refrigerator, Stove-Electric, Washer, See Remarks
Heating	Forced Air-1, Natural Gas
Stories	2
Has Basement	Yes
Basement	Full, Unfinished

Exterior

Exterior	Wood, Vinyl
Exterior Features	Landscaped, Low Maintenance Landscape, Picnic Area, Playground Nearby, Schools, Shopping Nearby, See Remarks
Roof	Asphalt Shingles
Construction	Wood, Vinyl

Foundation Concrete Perimeter

Additional Information

Date Listed May 7th, 2025

Days on Market 2

Zoning Zone 35

DATA IS DEEMED RELIABLE BUT IS NOT GUARANTEED ACCURATE BY THE REALTORS® ASSOCIATION OF EDMONTON. COPYRIGHT 2025 BY THE REALTORS® ASSOCIATION OF EDMONTON. ALL RIGHTS RESERVED.Trademarks are owned or controlled by the Canadian Real Estate Association (CREA) and identify real estate professionals who are members of CREA (REALTOR®, REALTORS®) and/or the quality of services they provide (MLS®, Multiple Listing Service®)

Listing information last updated on May 9th, 2025 at 3:02pm MDT