

\$299,900 - 502 10319 111 Street, Edmonton

MLS® #E4433502

\$299,900

2 Bedroom, 2.00 Bathroom, 1,074 sqft

Condo / Townhouse on 0.00 Acres

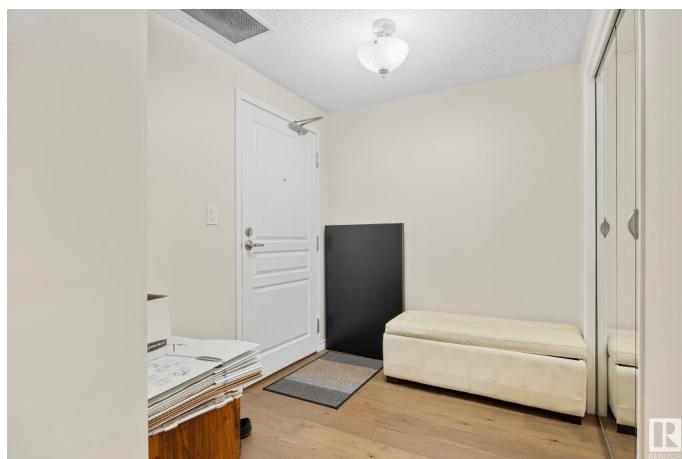
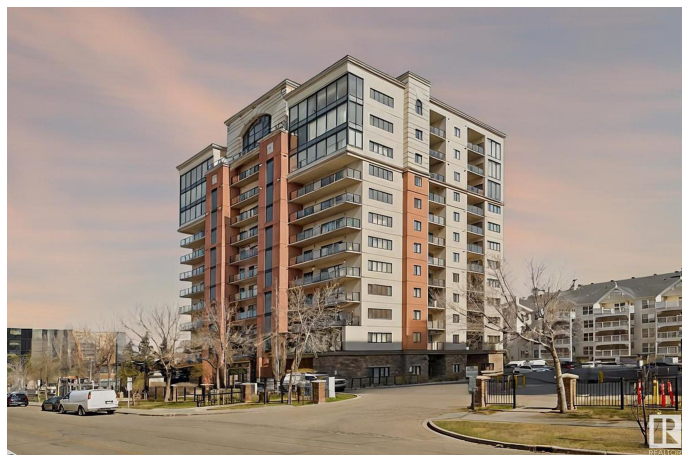
Downtown (Edmonton), Edmonton, AB

PLATINUM PROPERTY! Bright, modern and move-in ready! This 2 bed, 2 bath urban condo features 9'™ ceilings, engineered hardwood floors, and an open-concept layout filled with natural light from large South and West-facing windows. The stylish kitchen is equipped with stainless steel appliances, a mirrored backsplash, and granite countertops. The spacious living area has a gas fireplace and is perfect for entertaining or relaxing at home. Both bedrooms offer generous closet space, including the primary suite with its own 3-piece ensuite. Additional highlights include air conditioning, gas BBQ hookup, titled underground parking, and extra storage. Situated just steps from MacEwan University, transit, shopping, and with quick access to the Ice District, Brewery District, and U of A—this location offers unbeatable convenience and lifestyle appeal.

Built in 2005

Essential Information

MLS® #	E4433502
Price	\$299,900
Bedrooms	2
Bathrooms	2.00
Full Baths	2
Square Footage	1,074



Acres	0.00
Year Built	2005
Type	Condo / Townhouse
Sub-Type	Apartment High Rise
Style	Single Level Apartment
Status	Active

Community Information

Address	502 10319 111 Street
Area	Edmonton
Subdivision	Downtown (Edmonton)
City	Edmonton
County	ALBERTA
Province	AB
Postal Code	T5K 0A2

Amenities

Amenities	Air Conditioner, Ceiling 9 ft., Exercise Room, Guest Suite, Parking-Visitor, Party Room, Secured Parking, Security Door, Storage-In-Suite
Parking Spaces	1
Parking	Parkade, Stall, Underground

Interior

Interior Features	ensuite bathroom
Appliances	Dishwasher-Built-In, Dryer, Microwave Hood Fan, Refrigerator, Stove-Electric, Washer
Heating	Forced Air-1, Natural Gas
Fireplace	Yes
Fireplaces	Tile Surround
# of Stories	12
Stories	1
Has Basement	Yes
Basement	None, No Basement

Exterior

Exterior	Concrete, Brick, Stucco
Exterior Features	Flat Site, Landscaped, Low Maintenance Landscape, Public Transportation, Shopping Nearby, View City

Roof	Tar & Gravel
Construction	Concrete, Brick, Stucco
Foundation	Concrete Perimeter

School Information

Elementary	W&hkw&nt&win School
Middle	Westminster School
High	Victoria School

Additional Information

Date Listed	April 30th, 2025
Days on Market	48
Zoning	Zone 12
Condo Fee	\$640

DATA IS DEEMED RELIABLE BUT IS NOT GUARANTEED ACCURATE BY THE REALTORS® ASSOCIATION OF EDMONTON. COPYRIGHT 2025 BY THE REALTORS® ASSOCIATION OF EDMONTON. ALL RIGHTS RESERVED.Trademarks are owned or controlled by the Canadian Real Estate Association (CREA) and identify real estate professionals who are members of CREA (REALTOR®, REALTORS®) and/or the quality of services they provide (MLS®, Multiple Listing Service®)

Listing information last updated on June 17th, 2025 at 3:47am MDT