

## \$490,900 - 9517 190 Street Nw, Edmonton

MLS® #E4431816

**\$490,900**

4 Bedroom, 3.00 Bathroom, 1,231 sqft

Single Family on 0.00 Acres

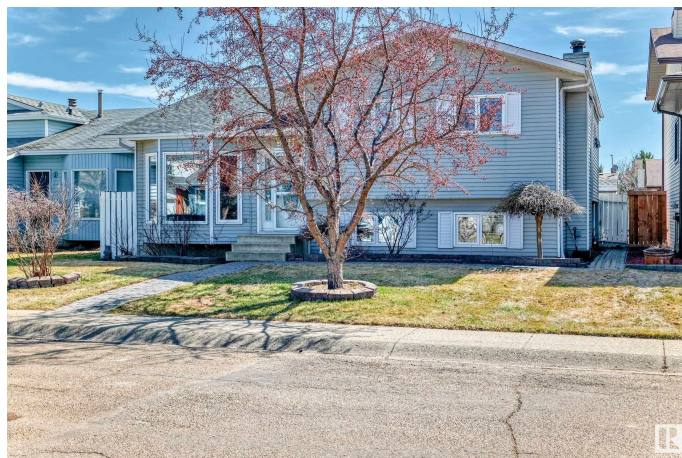
La Perle, Edmonton, AB

Beautiful 4 level split house located in a quiet and responsible West end, 5 minutes to West Edmonton Mall! Upstairs and lower floor living rooms have Bright and spacious floor plan, large family room, formal dining room and decent sized separate kitchen. Upstairs are large master bedroom, 2 additional good sized bedrooms and a large 4pc bathroom. On lower level is a fantastic family room with big windows, huge 3pc bathroom, massive laundry room! Basement is unfinished with another family room which is near completion. Newer HWT, dryer, washer, refrigerator, and doors. The large yard is fully fenced and landscaped perfect for home garden. Large detached garage fully completed provides additional space for storage. Easy access to parks, schools, bus stops and West Edmonton Mall. You don't want to miss this amazing property!

Built in 1983

### Essential Information

MLS® #	E4431816
Price	\$490,900
Bedrooms	4
Bathrooms	3.00
Full Baths	3
Square Footage	1,231



Acres	0.00
Year Built	1983
Type	Single Family
Sub-Type	Detached Single Family
Style	4 Level Split
Status	Active

### Community Information

Address	9517 190 Street Nw
Area	Edmonton
Subdivision	La Perle
City	Edmonton
County	ALBERTA
Province	AB
Postal Code	T5T 5L1

### Amenities

Amenities	See Remarks
Parking	Double Garage Detached

### Interior

Interior Features	ensuite bathroom
Appliances	Dishwasher-Built-In, Dryer, Refrigerator, Washer
Heating	In Floor Heat System, Natural Gas
Stories	2
Has Basement	Yes
Basement	Partial, Partially Finished

### Exterior

Exterior	Concrete, Asphalt
Exterior Features	Shopping Nearby
Roof	Asphalt Shingles
Construction	Concrete, Asphalt
Foundation	Concrete Perimeter

### Additional Information

Date Listed	April 19th, 2025
Days on Market	13
Zoning	Zone 20

DATA IS DEEMED RELIABLE BUT IS NOT GUARANTEED ACCURATE BY THE REALTORS® ASSOCIATION OF EDMONTON. COPYRIGHT 2025 BY THE REALTORS® ASSOCIATION OF EDMONTON. ALL RIGHTS RESERVED.Trademarks are owned or controlled by the Canadian Real Estate Association (CREA) and identify real estate professionals who are members of CREA (REALTOR®, REALTORS®) and/or the quality of services they provide (MLS®, Multiple Listing Service®)

Listing information last updated on May 2nd, 2025 at 2:02am MDT