

\$639,900 - 1140 Goodwin Circle Circle, Edmonton

MLS® #E4423385

\$639,900

5 Bedroom, 3.50 Bathroom, 2,281 sqft

Single Family on 0.00 Acres

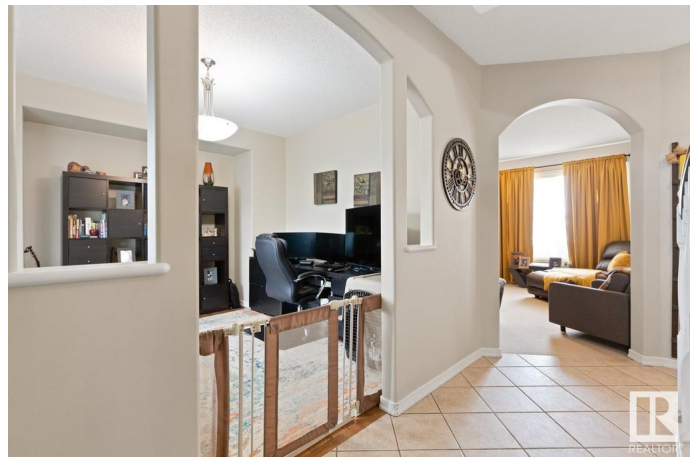
Glastonbury, Edmonton, AB

Welcome to Parkland Estates in Glastonbury. Perfect home for multigenerational family. This beautifully appointed two storey offers 5 bedrooms, finished basement & with an outstanding location. Upon entry, you are greeted with open concept living. The gourmet kitchen offers plenty of cabinets, stainless steel appliances, corner pantry & island that overlooks the dining & living room c/w cozy fireplace. Flex room & guest bath compliment the functional layout. Curved staircase leads you upstairs where you will find a family sized bonus room. The primary bedroom is spacious and offers a 5 piece ensuite with jacuzzi tub. The two spacious bedrooms, 4pc.bath & laundry complete the upper level. ENJOY the fully finished basement with 2 more bedrooms, 3pc bath, flex room & tons of storage, making this the perfect family home! LOVE the fenced & landscaped SOUTH yard with tiered deck. Steps away from Guinevere Park, trails, schools & shopping, plus easy access to Whitemud Drive & Anthony Henday.

Built in 2005

Essential Information

MLS® #	E4423385
Price	\$639,900
Bedrooms	5



Bathrooms	3.50
Full Baths	3
Half Baths	1
Square Footage	2,281
Acres	0.00
Year Built	2005
Type	Single Family
Sub-Type	Detached Single Family
Style	2 Storey
Status	Active

Community Information

Address	1140 Goodwin Circle Circle
Area	Edmonton
Subdivision	Glastonbury
City	Edmonton
County	ALBERTA
Province	AB
Postal Code	T5T 6W6

Amenities

Amenities	Deck, Gazebo, See Remarks
Parking	Double Garage Attached

Interior

Interior Features	ensuite bathroom
Appliances	Dishwasher-Built-In, Dryer, Garage Control, Garage Opener, Refrigerator, Stove-Electric, Washer
Heating	Forced Air-1, Natural Gas
Fireplace	Yes
Fireplaces	Corner
Stories	3
Has Basement	Yes
Basement	Full, Finished

Exterior

Exterior	Wood, Stone, Vinyl
Exterior Features	Cul-De-Sac, Fenced, Landscaped, Playground Nearby, Schools, Shopping Nearby, See Remarks

Roof	Asphalt Shingles
Construction	Wood, Stone, Vinyl
Foundation	Concrete Perimeter

Additional Information

Date Listed	February 28th, 2025
Days on Market	63
Zoning	Zone 58

DATA IS DEEMED RELIABLE BUT IS NOT GUARANTEED ACCURATE BY THE REALTORS® ASSOCIATION OF EDMONTON. COPYRIGHT 2025 BY THE REALTORS® ASSOCIATION OF EDMONTON. ALL RIGHTS RESERVED.Trademarks are owned or controlled by the Canadian Real Estate Association (CREA) and identify real estate professionals who are members of CREA (REALTOR®, REALTORS®) and/or the quality of services they provide (MLS®, Multiple Listing Service®)

Listing information last updated on May 2nd, 2025 at 11:03am MDT