

\$239,800 - 404 7021 South Terwillegar Drive, Edmonton

MLS® #E4418806

\$239,800

1 Bedroom, 1.00 Bathroom, 674 sqft

Condo / Townhouse on 0.00 Acres

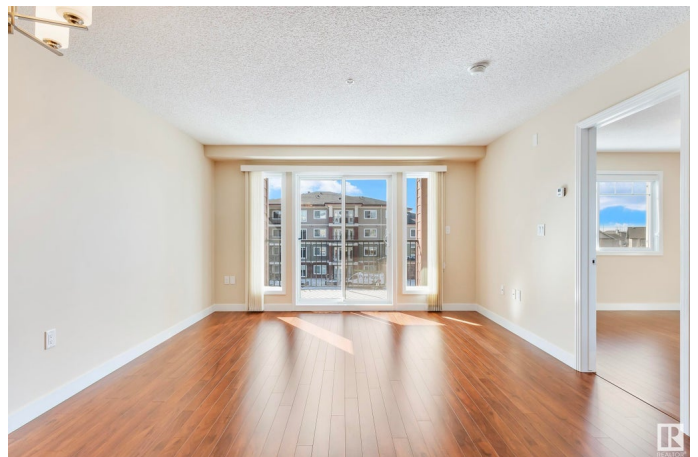
South Terwillegar, Edmonton, AB

The Quay, tranquil upscale living! Enjoy Abbey Lane Homes quality on this fourth floor west facing condo with 1 bedroom, 1 bathroom and luxury finishes that include granite counter tops, HIGH TOP FLOOR ceilings, laminate and porcelain tile floors, stainless appliances and TWO UNDERGROUND HEATED PARKING STALLS with One enclosed storage w/car wash and video security). Relax outdoors on spacious patio and natural gas hook up and more! The park and lake facing complex is the perfect community for mature residents, families, professionals & downsizers alike. Start your day and explore ample parks, walkways and lake access/views that encompass luxury lifestyles. Just minutes from great schools amenities, and Edmonton's most major access routes (Anthony Henday, Whitemud Freeway, Calgary Trail).

Built in 2016

Essential Information

MLS® #	E4418806
Price	\$239,800
Bedrooms	1
Bathrooms	1.00
Full Baths	1
Square Footage	674
Acres	0.00



Year Built	2016
Type	Condo / Townhouse
Sub-Type	Lowrise Apartment
Style	Single Level Apartment
Status	Active

Community Information

Address	404 7021 South Terwillegar Drive
Area	Edmonton
Subdivision	South Terwillegar
City	Edmonton
County	ALBERTA
Province	AB
Postal Code	T6R 3V7

Amenities

Amenities	Intercom, Parking-Extra, Parking-Visitor, Secured Parking, Natural Gas Stove Hookup
Parking Spaces	2
Parking	Underground
Is Waterfront	Yes

Interior

Interior Features	ensuite bathroom
Appliances	Dishwasher-Built-In, Dryer, Microwave Hood Fan, Refrigerator, Stacked Washer/Dryer, Stove-Electric, Washer
Heating	In Floor Heat System, Natural Gas
# of Stories	4
Stories	1
Has Basement	Yes
Basement	None, No Basement

Exterior

Exterior	Wood, Stone, Hardie Board Siding
Exterior Features	Backs Onto Lake, Backs Onto Park/Trees, Corner Lot, Cross Fenced, Environmental Reserve, Landscaped, Park/Reserve
Roof	Asphalt Shingles
Construction	Wood, Stone, Hardie Board Siding
Foundation	Concrete Perimeter

Additional Information

Date Listed	January 22nd, 2025
Days on Market	145
Zoning	Zone 14
Condo Fee	\$386

DATA IS DEEMED RELIABLE BUT IS NOT GUARANTEED ACCURATE BY THE REALTORS® ASSOCIATION OF EDMONTON. COPYRIGHT 2025 BY THE REALTORS® ASSOCIATION OF EDMONTON. ALL RIGHTS RESERVED.Trademarks are owned or controlled by the Canadian Real Estate Association (CREA) and identify real estate professionals who are members of CREA (REALTOR®, REALTORS®) and/or the quality of services they provide (MLS®, Multiple Listing Service®)

Listing information last updated on June 16th, 2025 at 6:47pm MDT